



**INTERNATIONAL  
GEMOLOGICAL  
INSTITUTE**

**LABORATORY GROWN DIAMOND REPORT**

June 17, 2024  
 IGI Report Number **LG639435162**  
 Description **LABORATORY GROWN DIAMOND**  
 Shape and Cutting Style **ROUND BRILLIANT**  
 Measurements **3.40 - 3.42 X 2.17 MM**

**GRADING RESULTS**

Carat Weight **0.15 CARAT**  
 Color Grade **D**  
 Clarity Grade **VS 1**  
 Cut Grade **GOOD**

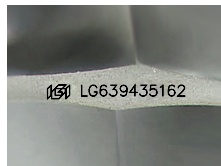
**ADDITIONAL GRADING INFORMATION**

Polish **VERY GOOD**  
 Symmetry **VERY GOOD**  
 Fluorescence **NONE**  
 Inscription(s) **IGI LG639435162**

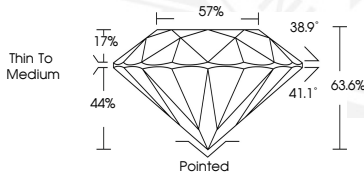
Comments: As Grown - No indication of post-growth treatment. This Laboratory Grown Diamond was created by High Pressure High Temperature (HPHT) growth process. Type II

**ELECTRONIC COPY**

**LG639435162**



Sample Image Used



June 17, 2024  
 IGI Report Number **LG639435162**  
**ROUND BRILLIANT**  
**LABORATORY GROWN DIAMOND**  
**3.40 - 3.42 X 2.17 MM**  
 Carat Weight **0.15 CARAT**  
 Color Grade **D**  
 Clarity Grade **VS 1**  
 Cut Grade **GOOD**  
 Polish **VERY GOOD**  
 Symmetry **VERY GOOD**  
 Fluorescence **NONE**  
 Inscription(s) **IGI LG639435162**  
 Comments: As Grown - No indication of post-growth treatment. This Laboratory Grown Diamond was created by High Pressure High Temperature (HPHT) growth process. Type II



June 17, 2024  
 IGI Report Number **LG639435162**  
**ROUND BRILLIANT**  
**LABORATORY GROWN DIAMOND**  
**3.40 - 3.42 X 2.17 MM**  
 Carat Weight **0.15 CARAT**  
 Color Grade **D**  
 Clarity Grade **VS 1**  
 Cut Grade **GOOD**  
 Polish **VERY GOOD**  
 Symmetry **VERY GOOD**  
 Fluorescence **NONE**  
 Inscription(s) **IGI LG639435162**  
 Comments: As Grown - No indication of post-growth treatment. This Laboratory Grown Diamond was created by High Pressure High Temperature (HPHT) growth process. Type II

THIS DOCUMENT WAS PRODUCED WITH THE FOLLOWING SECURITY MEASURES: SPECIAL DOCUMENT PAPER, INK SCREENS, WATERMARK, BACKGROUND DESIGN, HOLOGRAM AND OTHER SECURITY FEATURES NOT LISTED AND DO EXCEED DOCUMENT SECURITY INDUSTRY GUIDELINES.

For terms & conditions and to verify this report, please visit [www.igi.org](http://www.igi.org)