



ELECTRONIC COPY

LG639436343
Report verification at igi.org

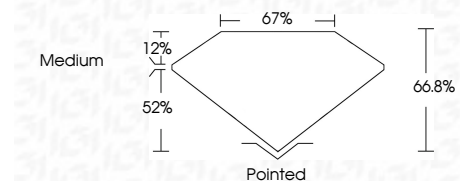


June 19, 2024
IGI Report Number **LG639436343**
Description **LABORATORY GROWN DIAMOND**
Shape and Cutting Style **CUT CORNERED
RECTANGULAR MODIFIED
BRILLIANT**

Measurements **13.73 X 9.53 X 6.37 MM**

GRADING RESULTS

Carat Weight **7.12 CARATS**
Color Grade **H**
Clarity Grade **VS 2**



ADDITIONAL GRADING INFORMATION

Polish **EXCELLENT**
Symmetry **EXCELLENT**
Fluorescence **NONE**
Inscription(s) **IGI LG639436343**
Comments: This Laboratory Grown Diamond was created by Chemical Vapor Deposition (CVD) growth process. Type IIa



June 19, 2024
IGI Report No LG639436343
CUT CORNERED RECT. MODIFIED BRILLIANT
13.73 X 9.53 X 6.37 MM
7.12 CARATS
H
VS 2
66.8%
52%
67%
Medium
Pointed
EXCELLENT
EXCELLENT
NONE
IGI LG639436343
Comments: This Laboratory Grown Diamond was created by Chemical Vapor Deposition (CVD) growth process. Type IIa

LABORATORY GROWN DIAMOND REPORT

June 19, 2024
IGI Report Number **LG639436343**
Description **LABORATORY GROWN DIAMOND**
Shape and Cutting Style **CUT CORNERED RECTANGULAR
MODIFIED BRILLIANT**
Measurements **13.73 X 9.53 X 6.37 MM**

GRADING RESULTS

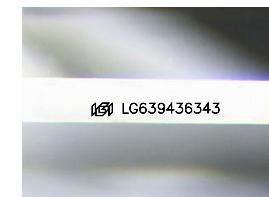
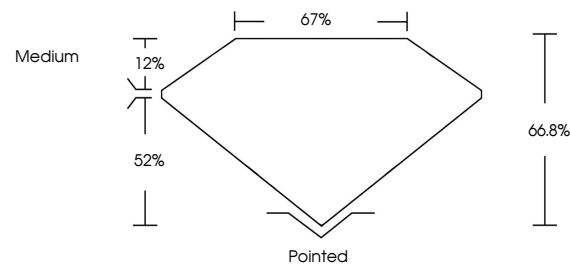
Carat Weight **7.12 CARATS**
Color Grade **H**
Clarity Grade **VS 2**

ADDITIONAL GRADING INFORMATION

Polish **EXCELLENT**
Symmetry **EXCELLENT**
Fluorescence **NONE**
Inscription(s) **IGI LG639436343**

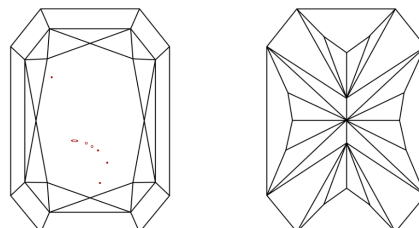
Comments: This Laboratory Grown Diamond was created by Chemical Vapor Deposition (CVD) growth process. Type IIa

PROPORTIONS



Sample Image Used

CLARITY CHARACTERISTICS



KEY TO SYMBOLS

Red symbols indicate internal characteristics.
Green symbols indicate external characteristics.

COLOR

D E F G H I J Faint Very Light Light

CLARITY

IF	VS ¹⁻²	VS ¹⁻²	SI ¹⁻²	I ¹⁻³
Internally Flawless	Very Very Slightly Included	Very Slightly Included	Slightly Included	Included

