



ELECTRONIC COPY

LG639436802
Report verification at igi.org



June 20, 2024

IGI Report Number **LG639436802**

Description **LABORATORY GROWN DIAMOND**

Shape and Cutting Style **ROUND BRILLIANT**

Measurements **6.53 - 6.58 X 4.01 MM**

GRADING RESULTS

Carat Weight **1.08 CARAT**

Color Grade **E**

Clarity Grade **VS 1**

Cut Grade **EXCELLENT**

June 20, 2024
IGI Report Number **LG639436802**
Description **LABORATORY GROWN DIAMOND**
Shape and Cutting Style **ROUND BRILLIANT**
Measurements **6.53 - 6.58 X 4.01 MM**

GRADING RESULTS

Carat Weight **1.08 CARAT**

Color Grade **E**

Clarity Grade **VS 1**

Cut Grade **EXCELLENT**

ADDITIONAL GRADING INFORMATION

Polish **EXCELLENT**

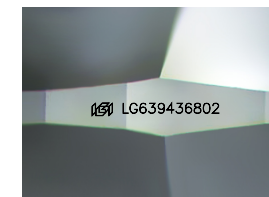
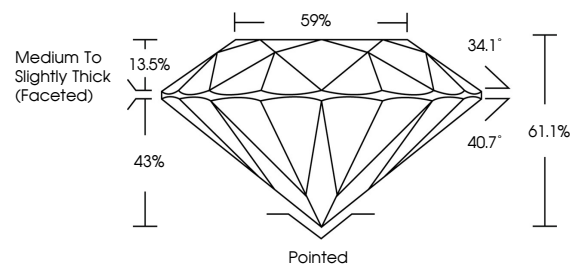
Symmetry **EXCELLENT**

Fluorescence **NONE**

Inscription(s) **LG639436802**

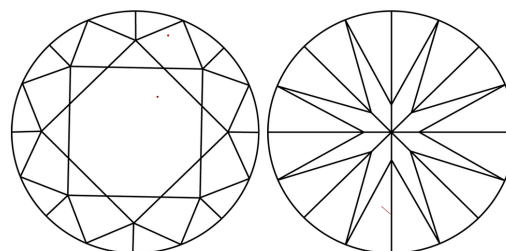
Comments: This Laboratory Grown Diamond was created by Chemical Vapor Deposition (CVD) growth process.
Type IIa

PROPORTIONS



Sample Image Used

CLARITY CHARACTERISTICS



KEY TO SYMBOLS

Red symbols indicate internal characteristics.
Green symbols indicate external characteristics.

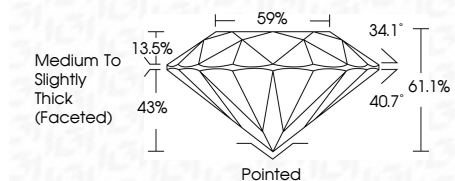
COLOR

D E F G H I J Faint Very Light Light

CLARITY

IF VS¹⁻² VS¹⁻² SI¹⁻² I¹⁻³

Internally Flawless Very Very Slightly Included Very Slightly Included Slightly Included Included



ADDITIONAL GRADING INFORMATION

Polish **EXCELLENT**

Symmetry **EXCELLENT**

Fluorescence **NONE**

Inscription(s) **LG639436802**

Comments: This Laboratory Grown Diamond was created by Chemical Vapor Deposition (CVD) growth process.
Type IIa



June 20, 2024
IGI Report No **LG639436802**
ROUND BRILLIANT
6.53 - 6.58 X 4.01 MM
Carat Weight **1.08 CARAT**
Color Grade **E**
Clarity Grade **VS 1**
Cut Grade **EXCELLENT**
Depth **61.1%**
Table **59%**
Girdle **Medium To Slightly Thick (Faceted)**
Culet **Pointed**
Polish **EXCELLENT**
Symmetry **EXCELLENT**
Fluorescence **NONE**
Inscription(s) **LG639436802**
Comments: This Laboratory Grown Diamond was created by Chemical Vapor Deposition (CVD) growth process.
Type IIa