



ELECTRONIC COPY

LG639440170 Report verification at igi.org



June 19, 2024 IGI Report Number LG639440170 Description LABORATORY GROWN DIAMOND Shape and Cutting Style ROUND BRILLIANT Measurements 10.45 - 10.50 X 6.49 MM GRADING RESULTS Carat Weight 4.40 CARATS Color Grade E Clarity Grade VVS 1 Cut Grade IDEAL

June 19, 2024 IGI Report Number LG639440170 Description LABORATORY GROWN DIAMOND Shape and Cutting Style ROUND BRILLIANT Measurements 10.45 - 10.50 X 6.49 MM

GRADING RESULTS

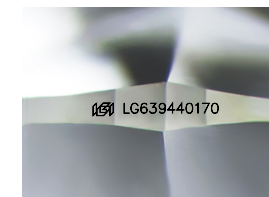
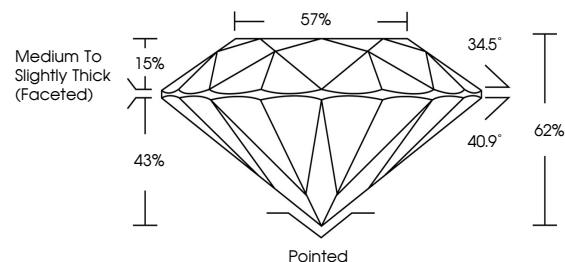
Carat Weight 4.40 CARATS Color Grade E Clarity Grade VVS 1 Cut Grade IDEAL

ADDITIONAL GRADING INFORMATION

Polish EXCELLENT Symmetry EXCELLENT Fluorescence NONE Inscription(s) IGI LG639440170

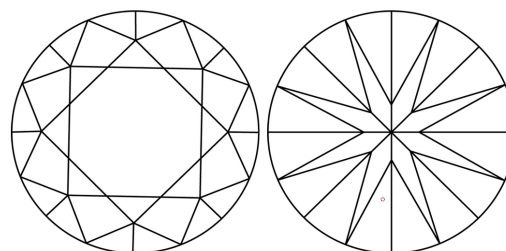
Comments: HEARTS & ARROWS As Grown - No indication of post-growth treatment. This Laboratory Grown Diamond was created by High Pressure High Temperature (HPHT) growth process. Type II

PROPORTIONS



Sample Image Used

CLARITY CHARACTERISTICS



KEY TO SYMBOLS

Red symbols indicate internal characteristics. Green symbols indicate external characteristics.

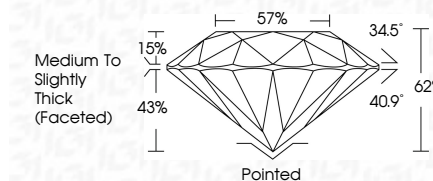


COLOR

D E F G H I J Faint Very Light Light

CLARITY

IF VVS 1-2 VS 1-2 SI 1-2 I 1-3 Internally Flawless Very Very Slightly Included Very Slightly Included Slightly Included Included



ADDITIONAL GRADING INFORMATION

Polish EXCELLENT Symmetry EXCELLENT Fluorescence NONE Inscription(s) IGI LG639440170 Comments: HEARTS & ARROWS As Grown - No indication of post-growth treatment. This Laboratory Grown Diamond was created by High Pressure High Temperature (HPHT) growth process. Type II



June 19, 2024 IGI Report No LG639440170 ROUND BRILLIANT 10.45 - 10.50 X 6.49 MM 4.40 CARATS E VVS 1 IDEAL 62% 57% Medium To Slightly Thick (Faceted) Pointed EXCELLENT EXCELLENT NONE NONE IGI LG639440170 Comments: HEARTS & ARROWS As Grown - No indication of post-growth treatment. This Laboratory Grown Diamond was created by High Pressure High Temperature (HPHT) growth process. Type II