



ELECTRONIC COPY

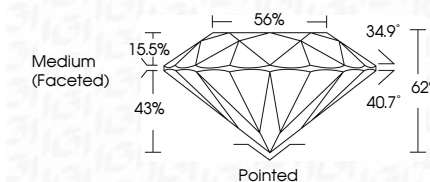
LG639440181
Report verification at igi.org



June 19, 2024
IGI Report Number LG639440181
Description LABORATORY GROWN DIAMOND
Shape and Cutting Style ROUND BRILLIANT
Measurements 10.14 - 10.18 X 6.30 MM

GRADING RESULTS

Carat Weight 4.02 CARATS
Color Grade G
Clarity Grade VVS 2
Cut Grade IDEAL



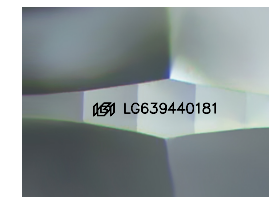
ADDITIONAL GRADING INFORMATION

Polish EXCELLENT
Symmetry EXCELLENT
Fluorescence NONE
Inscription(s) IGI LG639440181
Comments: HEARTS & ARROWS
As Grown - No indication of post-growth treatment.
This Laboratory Grown Diamond was created by High Pressure High Temperature (HPHT) growth process.
Type II



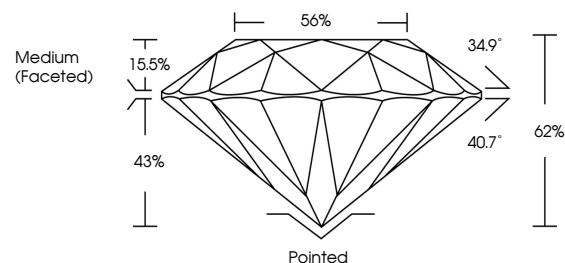
IGI

June 19, 2024
IGI Report No LG639440181
ROUND BRILLIANT
10.14 - 10.18 X 6.30 MM
4.02 CARATS
Color Grade G
Clarity Grade VVS 2
Cut Grade IDEAL
Depth 62%
Table 56%
Medium (Faceted)
Culet Pointed
Polish EXCELLENT
Symmetry EXCELLENT
Fluorescence NONE
Inscriptions(s) IGI LG639440181
Comments: HEARTS & ARROWS
As Grown - No indication of post-growth treatment.
This Laboratory Grown Diamond was created by High Pressure High Temperature (HPHT) growth process.
Type II

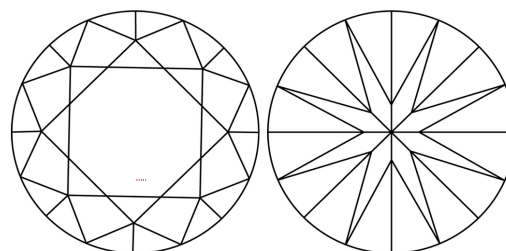


Sample Image Used

PROPORTIONS

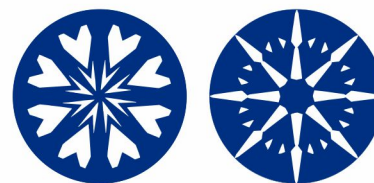


CLARITY CHARACTERISTICS



KEY TO SYMBOLS

Red symbols indicate internal characteristics.
Green symbols indicate external characteristics.



COLOR

D E F G H I J Faint Very Light Light

CLARITY

IF VVS 1-2 VS 1-2 SI 1-2 I 1-3
Internally Flawless Very Very Slightly Included Very Slightly Included Slightly Included Included



June 19, 2024
IGI Report Number LG639440181
Description LABORATORY GROWN DIAMOND
Shape and Cutting Style ROUND BRILLIANT
Measurements 10.14 - 10.18 X 6.30 MM

GRADING RESULTS

Carat Weight 4.02 CARATS
Color Grade G
Clarity Grade VVS 2
Cut Grade IDEAL

ADDITIONAL GRADING INFORMATION

Polish EXCELLENT
Symmetry EXCELLENT
Fluorescence NONE
Inscription(s) IGI LG639440181

Comments: HEARTS & ARROWS
As Grown - No indication of post-growth treatment.
This Laboratory Grown Diamond was created by High Pressure High Temperature (HPHT) growth process.
Type II