



ELECTRONIC COPY

LG639447669
Report verification at igi.org



July 19, 2024

IGI Report Number **LG639447669**

Description **LABORATORY GROWN DIAMOND**

Shape and Cutting Style **CUT CORNERED
RECTANGULAR MODIFIED
BRILLIANT**

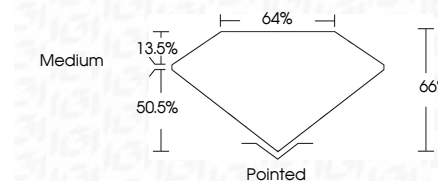
Measurements **7.84 X 5.67 X 3.74 MM**

GRADING RESULTS

Carat Weight **1.35 CARAT**

Color Grade **FANCY VIVID PINK**

Clarity Grade **VVS 2**



ADDITIONAL GRADING INFORMATION

Polish **EXCELLENT**

Symmetry **EXCELLENT**

Fluorescence **STRONG**

Inscription(s) **IGI LG639447669**

Comments: This Laboratory Grown Diamond was created by Chemical Vapor Deposition (CVD) growth process. Indications of post-growth treatment.



IGI

July 19, 2024
IGI Report No LG639447669
CUT CORNERED RECT. MODIFIED BRILLIANT
7.84 X 5.67 X 3.74 MM
1.35 CARAT
FANCY VIVID PINK
VVS 2
66%
50.5%
Medium
Pointed
EXCELLENT
EXCELLENT
STRONG
IGI LG639447669
Comments: This Laboratory Grown Diamond was created by Chemical Vapor Deposition (CVD) growth process. Indications of post-growth treatment.

LABORATORY GROWN DIAMOND REPORT

July 19, 2024

IGI Report Number **LG639447669**

Description **LABORATORY GROWN DIAMOND**

Shape and Cutting Style **CUT CORNERED RECTANGULAR
MODIFIED BRILLIANT**

Measurements **7.84 X 5.67 X 3.74 MM**

GRADING RESULTS

Carat Weight **1.35 CARAT**

Color Grade **FANCY VIVID PINK**

Clarity Grade **VVS 2**

ADDITIONAL GRADING INFORMATION

Polish **EXCELLENT**

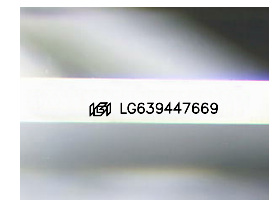
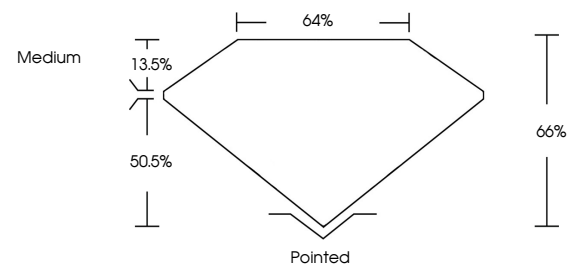
Symmetry **EXCELLENT**

Fluorescence **STRONG**

Inscription(s) **IGI LG639447669**

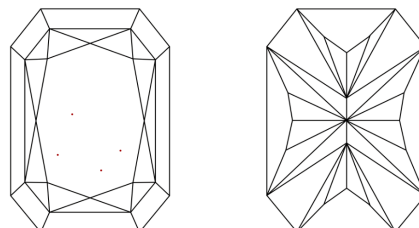
Comments: This Laboratory Grown Diamond was created by Chemical Vapor Deposition (CVD) growth process. Indications of post-growth treatment.

PROPORTIONS



Sample Image Used

CLARITY CHARACTERISTICS



KEY TO SYMBOLS

Red symbols indicate internal characteristics.
Green symbols indicate external characteristics.

COLOR

D E F G H I J Faint Very Light Light

CLARITY

IF	VS ¹⁻²	VS ¹⁻²	SI ¹⁻²	I ¹⁻³
Internally Flawless	Very Very Slightly Included	Very Slightly Included	Slightly Included	Included

