



ELECTRONIC COPY

LABORATORY GROWN DIAMOND REPORT

July 10, 2024
IGI Report Number LG639450317
Description LABORATORY GROWN DIAMOND
Shape and Cutting Style ROUND BRILLIANT
Measurements 5.15 - 5.18 X 3.13 MM

GRADING RESULTS

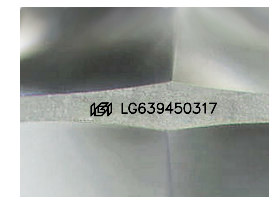
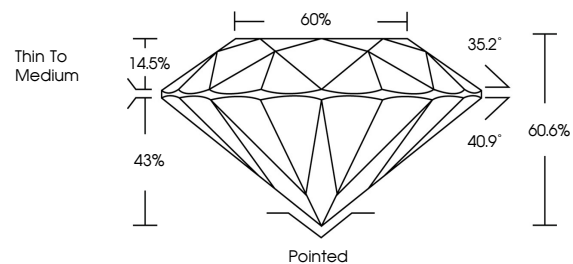
Carat Weight 0.51 CARAT
Color Grade D
Clarity Grade INTERNALLY FLAWLESS
Cut Grade VERY GOOD

ADDITIONAL GRADING INFORMATION

Polish VERY GOOD
Symmetry GOOD
Fluorescence NONE
Inscription(s) IGI LG639450317

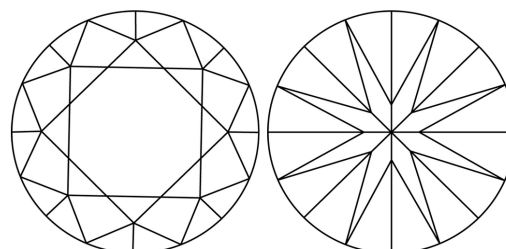
Comments: This Laboratory Grown Diamond was created by Chemical Vapor Deposition (CVD) growth process.
Type IIa

PROPORTIONS



Sample Image Used

CLARITY CHARACTERISTICS



KEY TO SYMBOLS

Red symbols indicate internal characteristics.
Green symbols indicate external characteristics.

COLOR

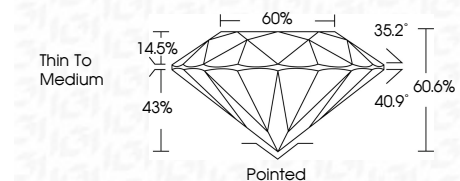
D E F G H I J Faint Very Light Light

CLARITY

IF VS 1-2 VS 1-2 SI 1-2 I 1-3
Internally Flawless Very Very Slightly Included Very Slightly Included Slightly Included Included



July 10, 2024
IGI Report Number LG639450317
Description LABORATORY GROWN DIAMOND
Shape and Cutting Style ROUND BRILLIANT
Measurements 5.15 - 5.18 X 3.13 MM
GRADING RESULTS
Carat Weight 0.51 CARAT
Color Grade D
Clarity Grade INTERNALLY FLAWLESS
Cut Grade VERY GOOD



ADDITIONAL GRADING INFORMATION

Polish VERY GOOD
Symmetry GOOD
Fluorescence NONE
Inscription(s) IGI LG639450317
Comments: This Laboratory Grown Diamond was created by Chemical Vapor Deposition (CVD) growth process.
Type IIa



IGI



July 10, 2024
IGI Report No LG639450317
ROUND BRILLIANT
5.15 - 5.18 X 3.13 MM
0.51 CARAT
D
VERY GOOD
D
60.6%
66%
Thin To Medium
Pointed
VERY GOOD
GOOD
NONE
IGI LG639450317
Comments: This Laboratory Grown Diamond was created by Chemical Vapor Deposition (CVD) growth process.
Type IIa