



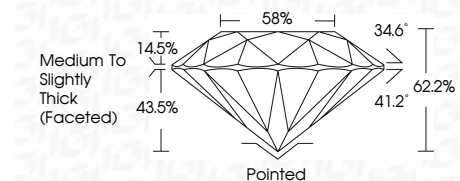
ELECTRONIC COPY

LG639452302
Report verification at igi.org



July 31, 2024
IGI Report Number LG639452302
Description LABORATORY GROWN DIAMOND
Shape and Cutting Style ROUND BRILLIANT
Measurements 8.25 - 8.28 X 5.14 MM

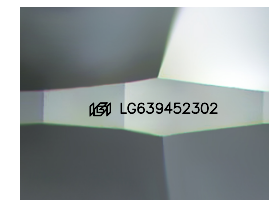
GRADING RESULTS
Carat Weight 2.17 CARATS
Color Grade F
Clarity Grade VS 1
Cut Grade IDEAL



ADDITIONAL GRADING INFORMATION
Polish EXCELLENT
Symmetry EXCELLENT
Fluorescence NONE
Inscription(s) IGI LG639452302
Comments: This Laboratory Grown Diamond was created by Chemical Vapor Deposition (CVD) growth process. Type IIa

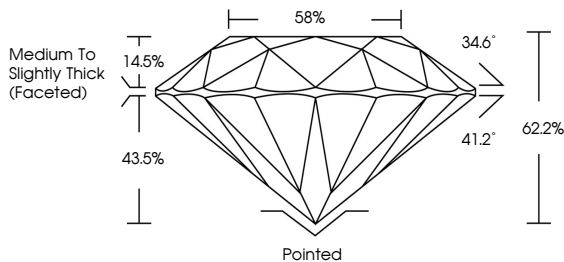


July 31, 2024
IGI Report No. LG639452302
ROUND BRILLIANT
8.25 - 8.28 X 5.14 MM
2.17 CARATS
Color Grade F
Clarity Grade VS 1
Cut Grade IDEAL
Depth 62.2%
Table 58%
Medium To Slightly Thick (Faceted)
Pointed
Polish EXCELLENT
Symmetry EXCELLENT
Fluorescence NONE
Inscription(s) IGI LG639452302
Comments: This Laboratory Grown Diamond was created by Chemical Vapor Deposition (CVD) growth process. Type IIa

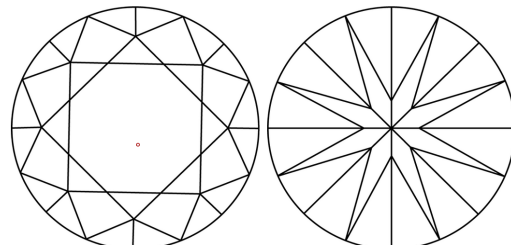


Sample Image Used

PROPORTIONS



CLARITY CHARACTERISTICS



KEY TO SYMBOLS
Red symbols indicate internal characteristics.
Green symbols indicate external characteristics.

Table with 10 columns: D, E, F, G, H, I, J, Faint, Very Light, Light

Table with 5 columns: IF, VS 1-2, VS 1-2, SI 1-2, I 1-3
Internally Flawless, Very Very Slightly Included, Very Slightly Included, Slightly Included, Included

