



# INTERNATIONAL GEMOLOGICAL INSTITUTE

ELECTRONIC COPY

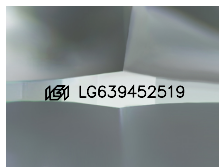
LG639452519



July 31, 2024  
 IGI Report Number LG639452519  
 ROUND BRILLIANT  
 LABORATORY GROWN DIAMOND  
 5.78 - 5.79 X 3.48 MM  
 Carat Weight 0.71 CARAT  
 Color Grade D  
 Clarity Grade VS 2  
 Cut Grade IDEAL  
 Polish EXCELLENT  
 Symmetry EXCELLENT  
 Fluorescence NONE  
 Inscription(s) IGI LG639452519

## LABORATORY GROWN DIAMOND REPORT

July 31, 2024  
 IGI Report Number LG639452519  
 Description LABORATORY GROWN DIAMOND  
 Shape and Cutting Style ROUND BRILLIANT  
 Measurements 5.78 - 5.79 X 3.48 MM



Sample Image Used

Comments: As Grown - No indication of post-growth treatment. This Laboratory Grown Diamond was created by High Pressure High Temperature (HPHT) growth process. Type II

### GRADING RESULTS

Carat Weight 0.71 CARAT  
 Color Grade D  
 Clarity Grade VS 2  
 Cut Grade IDEAL

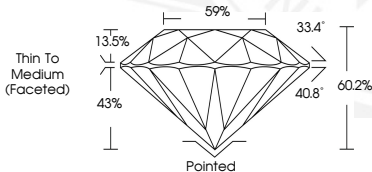
### ADDITIONAL GRADING INFORMATION

Polish EXCELLENT  
 Symmetry EXCELLENT  
 Fluorescence NONE  
 Inscription(s) IGI LG639452519

Comments: As Grown - No indication of post-growth treatment. This Laboratory Grown Diamond was created by High Pressure High Temperature (HPHT) growth process. Type II



July 31, 2024  
 IGI Report Number LG639452519  
 ROUND BRILLIANT  
 LABORATORY GROWN DIAMOND  
 5.78 - 5.79 X 3.48 MM  
 Carat Weight 0.71 CARAT  
 Color Grade D  
 Clarity Grade VS 2  
 Cut Grade IDEAL  
 Polish EXCELLENT  
 Symmetry EXCELLENT  
 Fluorescence NONE  
 Inscription(s) IGI LG639452519



THIS DOCUMENT WAS PRODUCED WITH THE FOLLOWING SECURITY MEASURES: SPECIAL DOCUMENT PAPER, INK SCREENS, WATERMARK, BACKGROUND DESIGNS, HOLOGRAM AND OTHER SECURITY FEATURES NOT LISTED AND DO EXCEED DOCUMENT SECURITY INDUSTRY GUIDELINES.

For terms & conditions and to verify this report, please visit [www.igi.org](http://www.igi.org)