



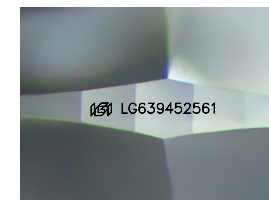
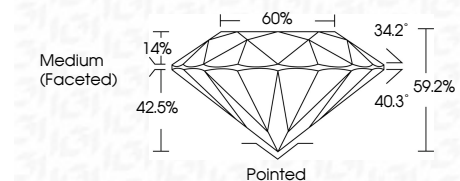
ELECTRONIC COPY

LG639452561
Report verification at igi.org



August 1, 2024
IGI Report Number LG639452561
Description LABORATORY GROWN DIAMOND
Shape and Cutting Style ROUND BRILLIANT
Measurements 9.21 - 9.24 X 5.46 MM

GRADING RESULTS
Carat Weight 2.85 CARATS
Color Grade D
Clarity Grade VVS 2
Cut Grade IDEAL



Sample Image Used

ADDITIONAL GRADING INFORMATION
Polish VERY GOOD
Symmetry EXCELLENT
Fluorescence NONE
Inscription(s) IGI LG639452561
Comments: This Laboratory Grown Diamond was created by Chemical Vapor Deposition (CVD) growth process. Type IIa



August 1, 2024
IGI Report No LG639452561
ROUND BRILLIANT
9.21 - 9.24 X 5.46 MM
2.85 CARATS
D
VVS 2
IDEAL
59.2%
60%
Medium (Faceted)
Pointed
VERY GOOD
EXCELLENT
NONE
IGI LG639452561
Comments: This Laboratory Grown Diamond was created by Chemical Vapor Deposition (CVD) growth process. Type IIa

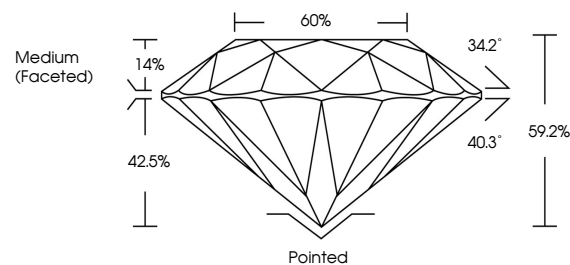
August 1, 2024
IGI Report Number LG639452561
Description LABORATORY GROWN DIAMOND
Shape and Cutting Style ROUND BRILLIANT
Measurements 9.21 - 9.24 X 5.46 MM

GRADING RESULTS
Carat Weight 2.85 CARATS
Color Grade D
Clarity Grade VVS 2
Cut Grade IDEAL

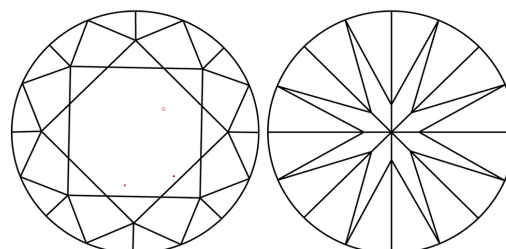
ADDITIONAL GRADING INFORMATION
Polish VERY GOOD
Symmetry EXCELLENT
Fluorescence NONE
Inscription(s) IGI LG639452561

Comments: This Laboratory Grown Diamond was created by Chemical Vapor Deposition (CVD) growth process. Type IIa

PROPORTIONS



CLARITY CHARACTERISTICS



KEY TO SYMBOLS

Red symbols indicate internal characteristics.
Green symbols indicate external characteristics.

COLOR

D E F G H I J Faint Very Light Light

CLARITY

IF VVS 1-2 VS 1-2 SI 1-2 I 1-3
Internally Flawless Very Very Slightly Included Very Slightly Included Slightly Included Included

