



**INTERNATIONAL
GEMOLOGICAL
INSTITUTE**

LABORATORY GROWN DIAMOND REPORT

August 7, 2024
 IGI Report Number **LG639453188**
 Description **LABORATORY GROWN DIAMOND**
 Shape and Cutting Style **ROUND BRILLIANT**
 Measurements **5.24 - 5.27 X 3.25 MM**

GRADING RESULTS

Carat Weight **0.55 CARAT**
 Color Grade **E**
 Clarity Grade **VS 2**
 Cut Grade **IDEAL**

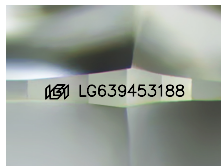
ADDITIONAL GRADING INFORMATION

Polish **EXCELLENT**
 Symmetry **EXCELLENT**
 Fluorescence **NONE**
 Inscription(s) **IGI LG639453188**

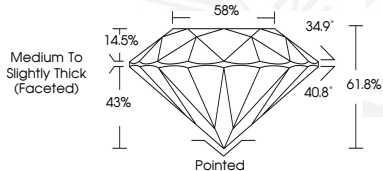
Comments: As Grown - No indication of post-growth treatment. This Laboratory Grown Diamond was created by High Pressure High Temperature (HPHT) growth process. Type II

ELECTRONIC COPY

LG639453188



Sample Image Used



August 7, 2024
 IGI Report Number **LG639453188**
 ROUND BRILLIANT
 LABORATORY GROWN DIAMOND
 5.24 - 5.27 X 3.25 MM
 Carat Weight **0.55 CARAT**
 Color Grade **E**
 Clarity Grade **VS 2**
 Cut Grade **IDEAL**
 Polish **EXCELLENT**
 Symmetry **EXCELLENT**
 Fluorescence **NONE**
 Inscription(s) **IGI LG639453188**
 Comments: As Grown - No indication of post-growth treatment. This Laboratory Grown Diamond was created by High Pressure High Temperature (HPHT) growth process. Type II



August 7, 2024
 IGI Report Number **LG639453188**
 ROUND BRILLIANT
 LABORATORY GROWN DIAMOND
 5.24 - 5.27 X 3.25 MM
 Carat Weight **0.55 CARAT**
 Color Grade **E**
 Clarity Grade **VS 2**
 Cut Grade **IDEAL**
 Polish **EXCELLENT**
 Symmetry **EXCELLENT**
 Fluorescence **NONE**
 Inscription(s) **IGI LG639453188**
 Comments: As Grown - No indication of post-growth treatment. This Laboratory Grown Diamond was created by High Pressure High Temperature (HPHT) growth process. Type II

THIS DOCUMENT WAS PRODUCED WITH THE FOLLOWING SECURITY MEASURES: SPECIAL DOCUMENT PAPER, INK SCREENS, WATERMARK, BACKGROUND DESIGN, HOLOGRAM AND OTHER SECURITY FEATURES NOT LISTED AND DO EXCEED DOCUMENT SECURITY INDUSTRY GUIDELINES.

For terms & conditions and to verify this report, please visit www.igi.org