



ELECTRONIC COPY

LG639456355
Report verification at igi.org



June 30, 2024

IGI Report Number LG639456355

Description LABORATORY GROWN DIAMOND

Shape and Cutting Style CUT CORNERED RECTANGULAR MODIFIED BRILLIANT

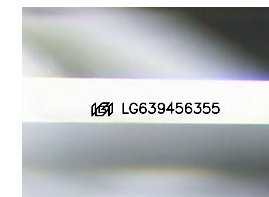
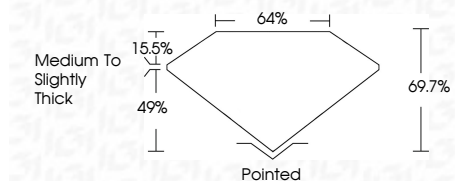
Measurements 10.12 X 7.04 X 4.91 MM

GRADING RESULTS

Carat Weight 3.08 CARATS

Color Grade FANCY VIVID YELLOW

Clarity Grade VVS 2



Sample Image Used

ADDITIONAL GRADING INFORMATION

Polish EXCELLENT

Symmetry EXCELLENT

Fluorescence NONE

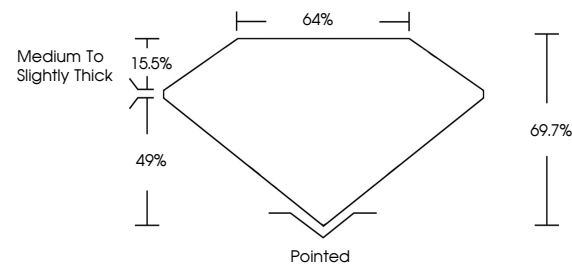
Inscription(s) LG639456355

Comments: This Laboratory Grown Diamond was created by Chemical Vapor Deposition (CVD) growth process.

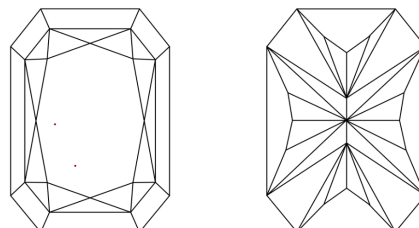


June 30, 2024
IGI Report No. LG639456355
CUT CORNERED RECT. MODIFIED BRILLIANT
10.12 X 7.04 X 4.91 MM
3.08 CARATS
FANCY VIVID YELLOW
VVS 2
69.7%
49%
Medium to Slightly Thick
Pointed
EXCELLENT
EXCELLENT
NONE
IGI LG639456355
Comments: This Laboratory Grown Diamond was created by Chemical Vapor Deposition (CVD) growth process.

PROPORTIONS



CLARITY CHARACTERISTICS



KEY TO SYMBOLS

Red symbols indicate internal characteristics.
Green symbols indicate external characteristics.

COLOR

D E F G H I J Faint Very Light Light

CLARITY

IF VVS 1-2 VS 1-2 SI 1-2 I 1-3
Internally Flawless Very Very Slightly Included Very Slightly Included Slightly Included Included

June 30, 2024

IGI Report No. LG639456355

CUT CORNERED RECT. MODIFIED BRILLIANT

10.12 X 7.04 X 4.91 MM

3.08 CARATS

FANCY VIVID YELLOW

VVS 2

69.7%

49%

Medium to Slightly Thick

Pointed

EXCELLENT

EXCELLENT

NONE

IGI LG639456355

Comments: This Laboratory Grown Diamond was created by Chemical Vapor Deposition (CVD) growth process.