

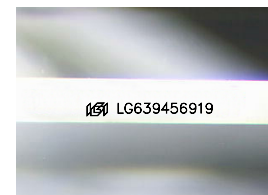
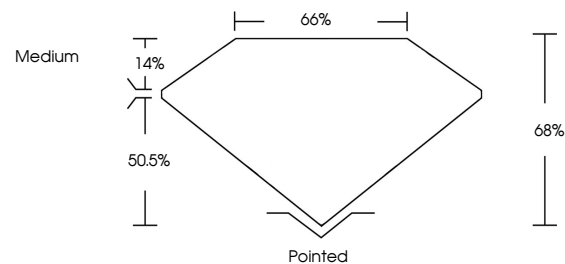


**ELECTRONIC COPY**

## LABORATORY GROWN DIAMOND REPORT

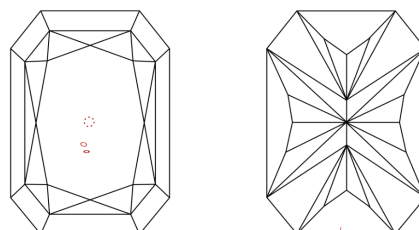
LG639456919  
Report verification at [igi.org](https://igi.org)

## PROPORTIONS



Sample Image Used

## CLARITY CHARACTERISTICS



### KEY TO SYMBOLS

Red symbols indicate internal characteristics.  
Green symbols indicate external characteristics.

## COLOR

D E F G H I J Faint Very Light Light

## CLARITY

IF	VVS <sup>1-2</sup>	VS <sup>1-2</sup>	SI <sup>1-2</sup>	I <sup>1-3</sup>
Internally Flawless	Very Very Slightly Included	Very Slightly Included	Slightly Included	Included

## LABORATORY GROWN DIAMOND REPORT



June 21, 2024

IGI Report Number **LG639456919**Description **LABORATORY GROWN DIAMOND**

Shape and Cutting Style

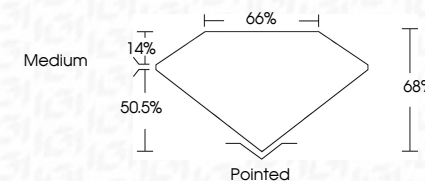
Measurements **9.34 X 6.76 X 4.60 MM**

## GRADING RESULTS

Carat Weight **2.52 CARATS**

Color Grade	H
-------------	---

Clarity Grade VS 2



### ADDITIONAL GRADING INFORMATION

Polish **EXCELLENT**Symmetry **EXCELLENT**Fluorescence NONEInscription(s)  LG639456919

Comments: This Laboratory Grown Diamond was created by Chemical Vapor Deposition (CVD) growth process.  
Type IIa



© IGI 2020, International Gemological Institute

FD - 10 20

**www.igi.org**

THIS DOCUMENT WAS PRODUCED WITH THE FOLLOWING SECURITY MEASURES: SPECIAL DOCUMENT PAPER, INK SCREENS, WATERMARK, BACKGROUND DESIGNS, HOLOGRAM AND OTHER SECURITY FEATURES NOT LISTED AND DO EXCEED DOCUMENT SECURITY INDUSTRY GUIDELINE

June 21, 2024	
SI Report No. G639456919	
SUBMITTED BY: COT CORNBED BECT. MODIFIED BRILLIANT	
DATE: 06/24/24	2.62 CARATS
SIZE: 3.4 x 3.7 x 4.0 MM	H
	VVS 2
	66%
	66%
	Medium
	Paired
	EXCELLENT
	EXCELLENT
	NONE
	(#) G639456919
<b>Comments:</b>	
Grown Diamond was created by Chemical Vapor Deposition (CVD) growth process.	
Type IIA	