



ELECTRONIC COPY

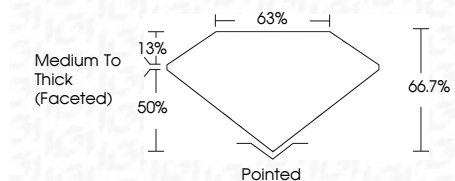
LG639457951 Report verification at igi.org



June 18, 2024 IGI Report Number LG639457951 Description LABORATORY GROWN DIAMOND Shape and Cutting Style SQUARE CUSHION BRILLIANT Measurements 6.81 X 6.66 X 4.44 MM

GRADING RESULTS

Carat Weight 1.56 CARAT Color Grade E Clarity Grade SI 1



ADDITIONAL GRADING INFORMATION

Polish EXCELLENT Symmetry EXCELLENT Fluorescence NONE Inscription(s) IGI LG639457951 Comments: This Laboratory Grown Diamond was created by Chemical Vapor Deposition (CVD) growth process. Type IIa



June 18, 2024 IGI Report No LG639457951 SQUARE CUSHION BRILLIANT 6.81 X 6.66 X 4.44 MM 1.56 CARAT E SI 1 66.7% 63% Medium To Thick (Faceted) Pointed EXCELLENT EXCELLENT NONE IGI LG639457951

Comments: This Laboratory Grown Diamond was created by Chemical Vapor Deposition (CVD) growth process. Type IIa

LABORATORY GROWN DIAMOND REPORT

June 18, 2024 IGI Report Number LG639457951 Description LABORATORY GROWN DIAMOND Shape and Cutting Style SQUARE CUSHION BRILLIANT Measurements 6.81 X 6.66 X 4.44 MM

GRADING RESULTS

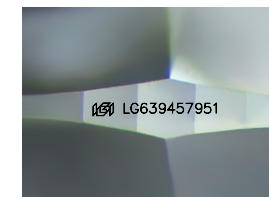
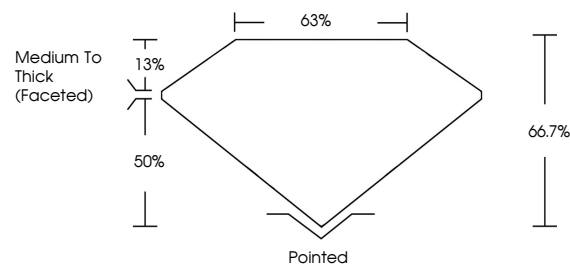
Carat Weight 1.56 CARAT Color Grade E Clarity Grade SI 1

ADDITIONAL GRADING INFORMATION

Polish EXCELLENT Symmetry EXCELLENT Fluorescence NONE Inscription(s) IGI LG639457951

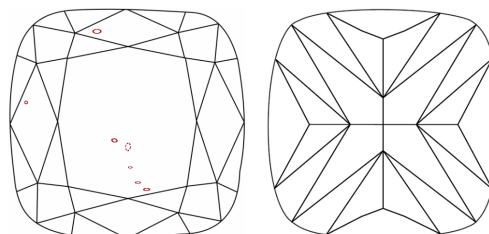
Comments: This Laboratory Grown Diamond was created by Chemical Vapor Deposition (CVD) growth process. Type IIa

PROPORTIONS



Sample Image Used

CLARITY CHARACTERISTICS



KEY TO SYMBOLS

Red symbols indicate internal characteristics. Green symbols indicate external characteristics.

COLOR

D E F G H I J Faint Very Light Light

CLARITY

IF VS 1-2 VS 1-2 SI 1-2 I 1-3 Internally Flawless Very Very Slightly Included Very Slightly Included Slightly Included Included