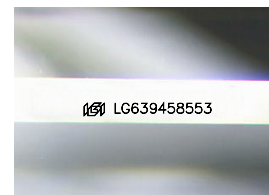
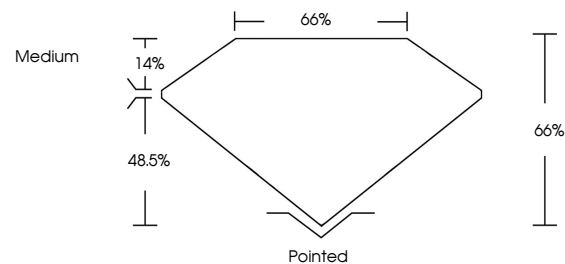


ELECTRONIC COPY

LABORATORY GROWN DIAMOND REPORT

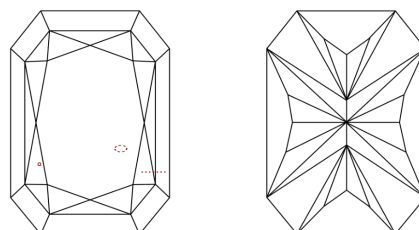
LG639458553
Report verification at igi.org

PROPORTIONS



Sample Image Used

CLARITY CHARACTERISTICS



KEY TO SYMBOLS

Red symbols indicate internal characteristics.
Green symbols indicate external characteristics.

COLOR

D E F G H I J Faint Very Light Light

CLARITY

IF	VVS ¹⁻²	VS ¹⁻²	SI ¹⁻²	I ¹⁻³
Internally Flawless	Very Very Slightly Included	Very Slightly Included	Slightly Included	Included

LABORATORY GROWN DIAMOND REPORT



June 22, 2024

IGI Report Number **LG639458553**

Description	LABORATORY GROWN DIAMOND
-------------	--------------------------

Shape and Cutting Style

CUT CORNERED
RECTANGULAR MODIFIED
BRILLIANT

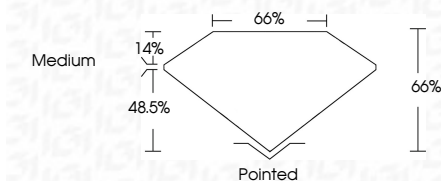
Measurements **8.02 X 5.56 X 3.67 MM**

GRADING RESULTS

Carat Weight **1.44 CARAT**

Color Grade	E
-------------	---

Clarity Grade VS 2



ADDITIONAL GRADING INFORMATION

Polish **EXCELLENT**Symmetry **EXCELLENT**Fluorescence **NONE**Inscription(s) LG639458553

Comments: This Laboratory Grown Diamond was created by Chemical Vapor Deposition (CVD) growth process.
Type IIa



© IGI 2020, International Gemological Institute

FD - 10 20

www.igi.org

THIS DOCUMENT WAS PRODUCED WITH THE FOLLOWING SECURITY MEASURES: SPECIAL DOCUMENT PAPER, INK SCREENS, WATERMARK, BACKGROUND DESIGNS, HOLOGRAM AND OTHER SECURITY FEATURES NOT LISTED AND DO EXCEED DOCUMENT SECURITY INDUSTRY GUIDELINE

June 22, 2024
 GL Report No. LG
 CUT CORNERED
 6.02 X 5.56 X 3.3
 Carat Weight
 Color Grade
 Clarity Grade
 Depth
 Table
 Girdle
 Culet
 Polish
 Symmetry
 Fluorescence
 Inscription(s)
 Comments:
 This Laboratory
 created by Chem
 (CVD) growth p
 type Iia