



ELECTRONIC COPY

LG639459343
Report verification at igi.org



June 20, 2024

IGI Report Number **LG639459343**

Description **LABORATORY GROWN DIAMOND**

Shape and Cutting Style **PRINCESS CUT**

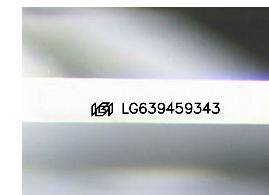
Measurements **6.64 X 6.57 X 4.69 MM**

GRADING RESULTS

Carat Weight **1.79 CARAT**

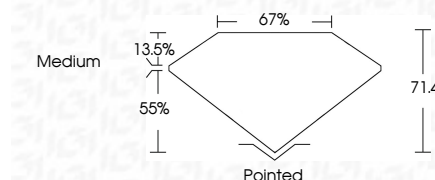
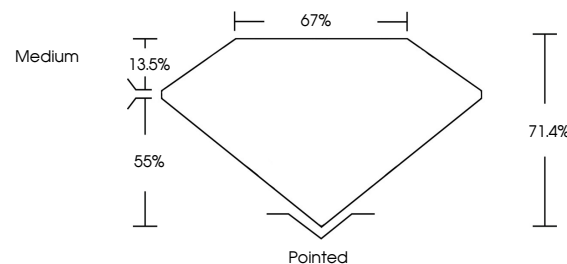
Color Grade **D**

Clarity Grade **VS 1**



Sample Image Used

PROPORTIONS



June 20, 2024

IGI Report Number **LG639459343**

Description **LABORATORY GROWN DIAMOND**

Shape and Cutting Style **PRINCESS CUT**

Measurements **6.64 X 6.57 X 4.69 MM**

GRADING RESULTS

Carat Weight **1.79 CARAT**

Color Grade **D**

Clarity Grade **VS 1**

ADDITIONAL GRADING INFORMATION

Polish **EXCELLENT**

Symmetry **EXCELLENT**

Fluorescence **NONE**

Inscription(s) **IGI LG639459343**

Comments: This Laboratory Grown Diamond was created by Chemical Vapor Deposition (CVD) growth process. Type IIa

COLOR

D E F G H I J Faint Very Light Light

CLARITY

IF	VS ¹⁻²	VS ¹⁻²	SI ¹⁻²	I ¹⁻³
Internally Flawless	Very Very Slightly Included	Very Slightly Included	Slightly Included	Included

ADDITIONAL GRADING INFORMATION

Polish **EXCELLENT**

Symmetry **EXCELLENT**

Fluorescence **NONE**

Inscription(s) **IGI LG639459343**

Comments: This Laboratory Grown Diamond was created by Chemical Vapor Deposition (CVD) growth process. Type IIa



IGI

June 20, 2024
IGI Report No. LG639459343
PRINCESS CUT

6.64 X 6.57 X 4.69 MM
1.79 CARAT
Color Grade D
Clarity Grade VS 1
Depth 71.4%
Table 13.5%
Girdle 67%
Medium
Pointed
Polish EXCELLENT
Symmetry EXCELLENT
Fluorescence NONE
Inscription(s) IGI LG639459343

Comments: This Laboratory Grown Diamond was created by Chemical Vapor Deposition (CVD) growth process. Type IIa