



**ELECTRONIC COPY**

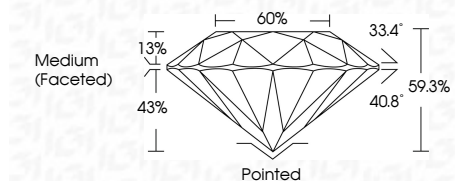
LG639459756  
Report verification at igi.org



June 22, 2024  
IGI Report Number **LG639459756**  
Description **LABORATORY GROWN DIAMOND**  
Shape and Cutting Style **ROUND BRILLIANT**  
Measurements **8.84 - 8.89 X 5.26 MM**

**GRADING RESULTS**

Carat Weight **2.51 CARATS**  
Color Grade **F**  
Clarity Grade **VVS 2**  
Cut Grade **IDEAL**



**ADDITIONAL GRADING INFORMATION**

Polish **EXCELLENT**  
Symmetry **EXCELLENT**  
Fluorescence **NONE**  
Inscription(s) **IGI LG639459756**  
Comments: This Laboratory Grown Diamond was created by Chemical Vapor Deposition (CVD) growth process. Type IIa



June 22, 2024  
IGI Report No **LG639459756**  
**ROUND BRILLIANT**  
8.84 - 8.89 X 5.26 MM  
2.51 CARATS  
F  
VVS 2  
IDEAL  
59.3%  
60%  
Medium (Faceted)  
Pointed  
EXCELLENT  
EXCELLENT  
NONE  
IGI LG639459756  
Comments: This Laboratory Grown Diamond was created by Chemical Vapor Deposition (CVD) growth process. Type IIa

**LABORATORY GROWN DIAMOND REPORT**

June 22, 2024  
IGI Report Number **LG639459756**  
Description **LABORATORY GROWN DIAMOND**  
Shape and Cutting Style **ROUND BRILLIANT**  
Measurements **8.84 - 8.89 X 5.26 MM**

**GRADING RESULTS**

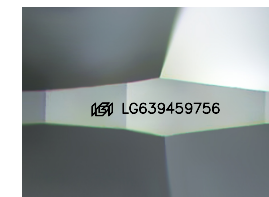
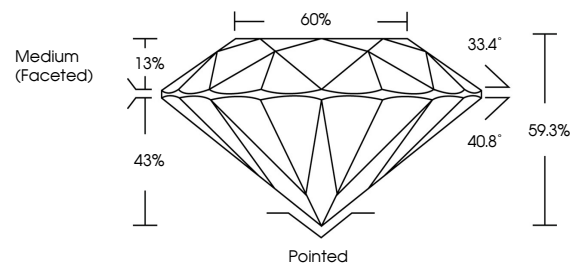
Carat Weight **2.51 CARATS**  
Color Grade **F**  
Clarity Grade **VVS 2**  
Cut Grade **IDEAL**

**ADDITIONAL GRADING INFORMATION**

Polish **EXCELLENT**  
Symmetry **EXCELLENT**  
Fluorescence **NONE**  
Inscription(s) **IGI LG639459756**

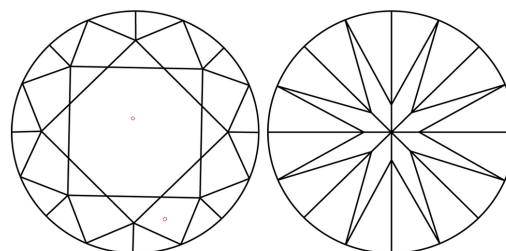
Comments: This Laboratory Grown Diamond was created by Chemical Vapor Deposition (CVD) growth process. Type IIa

**PROPORTIONS**



Sample Image Used

**CLARITY CHARACTERISTICS**



**KEY TO SYMBOLS**

Red symbols indicate internal characteristics.  
Green symbols indicate external characteristics.

**COLOR**

D E F G H I J Faint Very Light Light

**CLARITY**

IF VVS<sup>1-2</sup> VS<sup>1-2</sup> SI<sup>1-2</sup> I<sup>1-3</sup>  
Internally Flawless Very Very Slightly Included Very Slightly Included Slightly Included Included

