



ELECTRONIC COPY

LG639461363
Report verification at igi.org



June 19, 2024
IGI Report Number **LG639461363**
Description **LABORATORY GROWN DIAMOND**
Shape and Cutting Style **ROUND BRILLIANT**
Measurements **7.53 - 7.57 X 4.68 MM**
GRADING RESULTS
Carat Weight **1.68 CARAT**
Color Grade **F**
Clarity Grade **VS 1**
Cut Grade **EXCELLENT**

June 19, 2024
IGI Report Number **LG639461363**
Description **LABORATORY GROWN DIAMOND**
Shape and Cutting Style **ROUND BRILLIANT**
Measurements **7.53 - 7.57 X 4.68 MM**

GRADING RESULTS

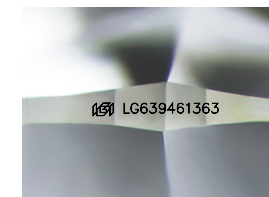
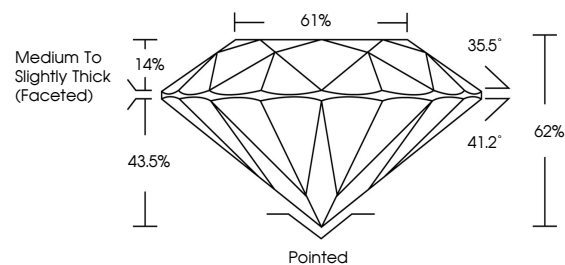
Carat Weight **1.68 CARAT**
Color Grade **F**
Clarity Grade **VS 1**
Cut Grade **EXCELLENT**

ADDITIONAL GRADING INFORMATION

Polish **EXCELLENT**
Symmetry **EXCELLENT**
Fluorescence **NONE**
Inscription(s) **LG639461363**

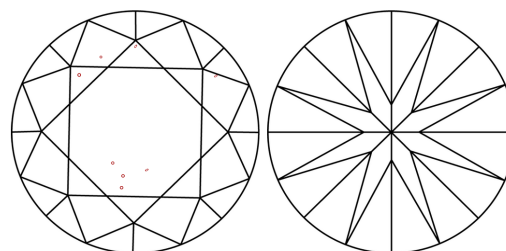
Comments: This Laboratory Grown Diamond was created by Chemical Vapor Deposition (CVD) growth process.
Type IIa

PROPORTIONS



Sample Image Used

CLARITY CHARACTERISTICS



KEY TO SYMBOLS

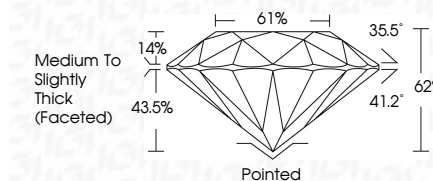
Red symbols indicate internal characteristics.
Green symbols indicate external characteristics.

COLOR

D E F G H I J Faint Very Light Light

CLARITY

IF	VS ¹⁻²	VS ¹⁻²	SI ¹⁻²	I ¹⁻³
Internally Flawless	Very Very Slightly Included	Very Slightly Included	Slightly Included	Included



ADDITIONAL GRADING INFORMATION

Polish **EXCELLENT**
Symmetry **EXCELLENT**
Fluorescence **NONE**
Inscription(s) **LG639461363**
Comments: This Laboratory Grown Diamond was created by Chemical Vapor Deposition (CVD) growth process.
Type IIa



IGI



June 19, 2024
IGI Report No LG639461363
ROUND BRILLIANT
7.53 - 7.57 X 4.68 MM
1.68 CARAT
Color Grade **F**
Clarity Grade **VS 1**
Depth **EXCELLENT**
Table **62%**
Girdle **61%**
Medium To Slightly Thick (Faceted)
Culet **Pointed**
Polish **EXCELLENT**
Symmetry **EXCELLENT**
Fluorescence **NONE**
Inscriptions(s) **LG639461363**
Comments: This Laboratory Grown Diamond was created by Chemical Vapor Deposition (CVD) growth process.
Type IIa