



**ELECTRONIC COPY**

LG639462536  
Report verification at igi.org



June 21, 2024

IGI Report Number **LG639462536**

Description **LABORATORY GROWN DIAMOND**

Shape and Cutting Style **CUT CORNERED  
RECTANGULAR MODIFIED  
BRILLIANT**

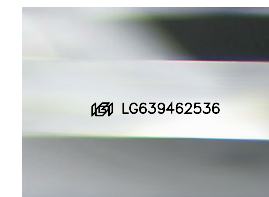
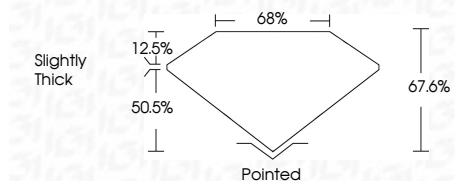
Measurements **7.95 X 5.52 X 3.73 MM**

**GRADING RESULTS**

Carat Weight **1.42 CARAT**

Color Grade **F**

Clarity Grade **VS 2**



Sample Image Used

**ADDITIONAL GRADING INFORMATION**

Polish **EXCELLENT**

Symmetry **EXCELLENT**

Fluorescence **NONE**

Inscription(s) **IGI LG639462536**

Comments: This Laboratory Grown Diamond was created by Chemical Vapor Deposition (CVD) growth process. Type IIa

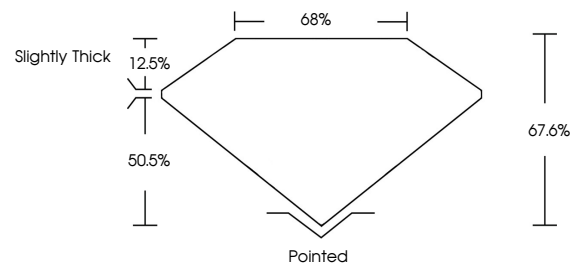


**IGI**

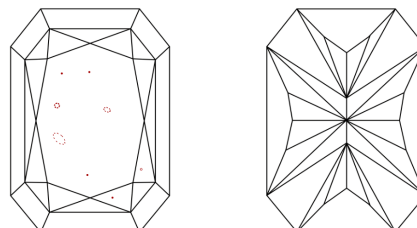
June 21, 2024  
IGI Report No. LG639462536  
CUT CORNERED RECT. MODIFIED BRILLIANT  
7.95 X 5.52 X 3.73 MM  
Carat Weight 1.42 CARAT  
Color Grade F  
Clarity Grade VS 2  
Depth 50.5%  
Table 12.5%  
Girdle Slightly Thick  
Culet Pointed  
Polish EXCELLENT  
Symmetry EXCELLENT  
Fluorescence NONE  
Inscription(s) IGI LG639462536  
Comments: This Laboratory Grown Diamond was created by Chemical Vapor Deposition (CVD) growth process. Type IIa



**PROPORTIONS**



**CLARITY CHARACTERISTICS**



**KEY TO SYMBOLS**

Red symbols indicate internal characteristics.  
Green symbols indicate external characteristics.

**COLOR**

D E F G H I J Faint Very Light Light

**CLARITY**

IF	VS <sup>1-2</sup>	VS <sup>1-2</sup>	SI <sup>1-2</sup>	I <sup>1-3</sup>
Internally Flawless	Very Very Slightly Included	Very Slightly Included	Slightly Included	Included

