



ELECTRONIC COPY

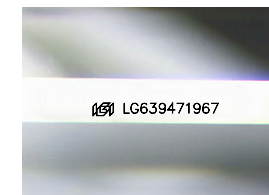
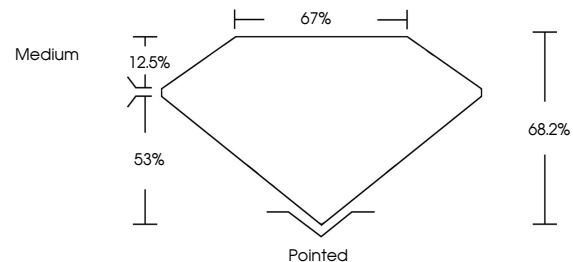
LG639471967
Report verification at igi.org



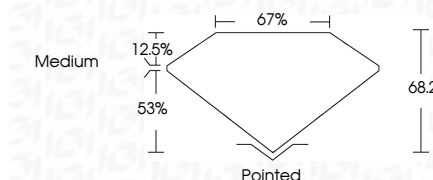
June 20, 2024
IGI Report Number **LG639471967**
Description **LABORATORY GROWN DIAMOND**
Shape and Cutting Style **PRINCESS CUT**
Measurements **6.47 X 6.47 X 4.41 MM**
GRADING RESULTS
Carat Weight **1.63 CARAT**
Color Grade **E**
Clarity Grade **VVS 2**

June 20, 2024
IGI Report Number **LG639471967**
Description **LABORATORY GROWN DIAMOND**
Shape and Cutting Style **PRINCESS CUT**
Measurements **6.47 X 6.47 X 4.41 MM**
GRADING RESULTS
Carat Weight **1.63 CARAT**
Color Grade **E**
Clarity Grade **VVS 2**

PROPORTIONS



Sample Image Used



ADDITIONAL GRADING INFORMATION

Polish **EXCELLENT**
Symmetry **EXCELLENT**
Fluorescence **NONE**
Inscription(s) **IGI LG639471967**

Comments: This Laboratory Grown Diamond was created by Chemical Vapor Deposition (CVD) growth process. Type IIa

ADDITIONAL GRADING INFORMATION

Polish **EXCELLENT**
Symmetry **EXCELLENT**
Fluorescence **NONE**
Inscription(s) **IGI LG639471967**
Comments: This Laboratory Grown Diamond was created by Chemical Vapor Deposition (CVD) growth process. Type IIa

COLOR

D E F G H I J Faint Very Light Light

CLARITY

IF	VVS ¹⁻²	VS ¹⁻²	SI ¹⁻²	I ¹⁻³
Internally Flawless	Very Very Slightly Included	Very Slightly Included	Slightly Included	Included



IGI



June 20, 2024
IGI Report No. LG639471967
PRINCESS CUT

6.47 X 6.47 X 4.41 MM
1.63 CARAT
E
VVS 2
68.2%
67%
Medium
Pointed
EXCELLENT
EXCELLENT
NONE
IGI LG639471967

Comments: This Laboratory Grown Diamond was created by Chemical Vapor Deposition (CVD) growth process. Type IIa