



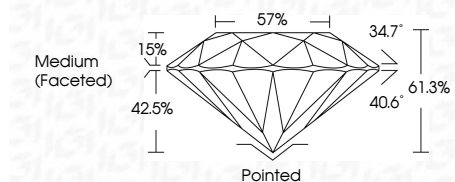
**ELECTRONIC COPY**

LG639472855  
Report verification at igi.org



June 22, 2024  
IGI Report Number **LG639472855**  
Description **LABORATORY GROWN DIAMOND**  
Shape and Cutting Style **ROUND BRILLIANT**  
Measurements **11.70 - 11.74 X 7.19 MM**

**GRADING RESULTS**  
Carat Weight **6.10 CARATS**  
Color Grade **E**  
Clarity Grade **VVS 1**  
Cut Grade **IDEAL**



**ADDITIONAL GRADING INFORMATION**  
Polish **EXCELLENT**  
Symmetry **EXCELLENT**  
Fluorescence **NONE**  
Inscription(s) **IGI LG639472855**  
Comments: HEARTS & ARROWS  
As Grown - No indication of post-growth treatment.  
This Laboratory Grown Diamond was created by High Pressure High Temperature (HPHT) growth process.  
Type II



June 22, 2024  
IGI Report No LG639472855  
ROUND BRILLIANT  
11.70 - 11.74 X 7.19 MM  
6.10 CARATS  
E  
VVS 1  
IDEAL  
61.3%  
57%  
Medium (Faceted)  
Pointed  
EXCELLENT  
EXCELLENT  
NONE  
IGI LG639472855  
Comments: HEARTS & ARROWS  
As Grown - No indication of post-growth treatment.  
This Laboratory Grown Diamond was created by High Pressure High Temperature (HPHT) growth process.  
Type II

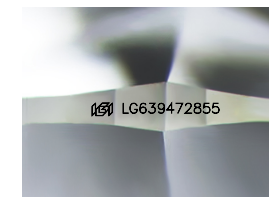
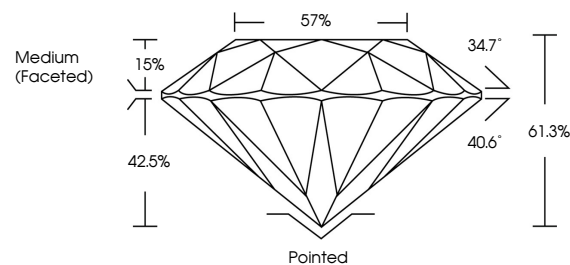
June 22, 2024  
IGI Report Number **LG639472855**  
Description **LABORATORY GROWN DIAMOND**  
Shape and Cutting Style **ROUND BRILLIANT**  
Measurements **11.70 - 11.74 X 7.19 MM**

**GRADING RESULTS**  
Carat Weight **6.10 CARATS**  
Color Grade **E**  
Clarity Grade **VVS 1**  
Cut Grade **IDEAL**

**ADDITIONAL GRADING INFORMATION**  
Polish **EXCELLENT**  
Symmetry **EXCELLENT**  
Fluorescence **NONE**  
Inscription(s) **IGI LG639472855**

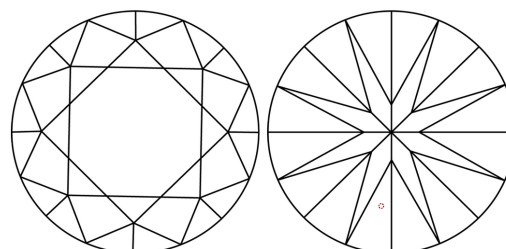
Comments: HEARTS & ARROWS  
As Grown - No indication of post-growth treatment.  
This Laboratory Grown Diamond was created by High Pressure High Temperature (HPHT) growth process.  
Type II

**PROPORTIONS**



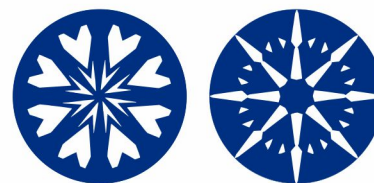
Sample Image Used

**CLARITY CHARACTERISTICS**



**KEY TO SYMBOLS**

Red symbols indicate internal characteristics.  
Green symbols indicate external characteristics.



**COLOR**

D E F G H I J Faint Very Light Light

**CLARITY**

IF	VVS <sup>1-2</sup>	VS <sup>1-2</sup>	SI <sup>1-2</sup>	I <sup>1-3</sup>
Internally Flawless	Very Very Slightly Included	Very Slightly Included	Slightly Included	Included

