



ELECTRONIC COPY

LG639480535
Report verification at igi.org



June 24, 2024
IGI Report Number **LG639480535**

Description **LABORATORY GROWN DIAMOND**

Shape and Cutting Style **CUT CORNERED
RECTANGULAR MODIFIED
BRILLIANT**

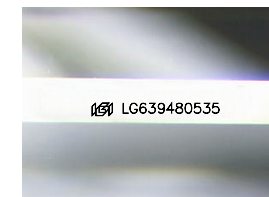
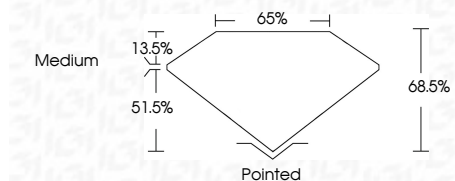
Measurements **9.74 X 6.60 X 4.52 MM**

GRADING RESULTS

Carat Weight **2.54 CARATS**

Color Grade **G**

Clarity Grade **VS 1**



Sample Image Used

ADDITIONAL GRADING INFORMATION

Polish **EXCELLENT**

Symmetry **EXCELLENT**

Fluorescence **NONE**

Inscription(s) **IGI LG639480535**

Comments: This Laboratory Grown Diamond was created by Chemical Vapor Deposition (CVD) growth process. Type IIa

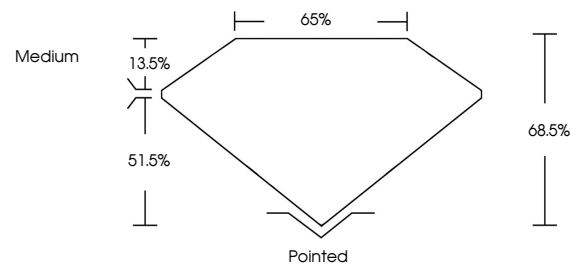


IGI

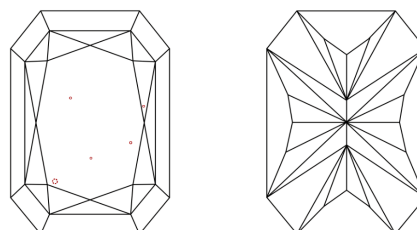
June 24, 2024
IGI Report No. LG639480535
CUT CORNERED RECT. MODIFIED BRILLIANT
9.74 X 6.60 X 4.52 MM
2.54 CARATS
G
VS 1
68.5%
51.5%
Medium
Pointed
EXCELLENT
EXCELLENT
NONE
IGI LG639480535
Comments: This Laboratory Grown Diamond was created by Chemical Vapor Deposition (CVD) growth process. Type IIa



PROPORTIONS



CLARITY CHARACTERISTICS



KEY TO SYMBOLS

Red symbols indicate internal characteristics.
Green symbols indicate external characteristics.

COLOR

D E F G H I J Faint Very Light Light

CLARITY

IF	VS ¹⁻²	VS ¹⁻²	SI ¹⁻²	I ¹⁻³
Internally Flawless	Very Very Slightly Included	Very Slightly Included	Slightly Included	Included