



ELECTRONIC COPY

LG639480583 Report verification at igi.org



June 17, 2024 IGI Report Number LG639480583 Description LABORATORY GROWN DIAMOND Shape and Cutting Style ROUND BRILLIANT Measurements 8.07 - 8.08 X 4.84 MM GRADING RESULTS Carat Weight 1.91 CARAT Color Grade F Clarity Grade VS 1 Cut Grade IDEAL

June 17, 2024 IGI Report Number LG639480583 Description LABORATORY GROWN DIAMOND Shape and Cutting Style ROUND BRILLIANT Measurements 8.07 - 8.08 X 4.84 MM

GRADING RESULTS

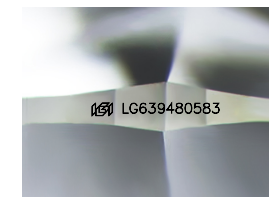
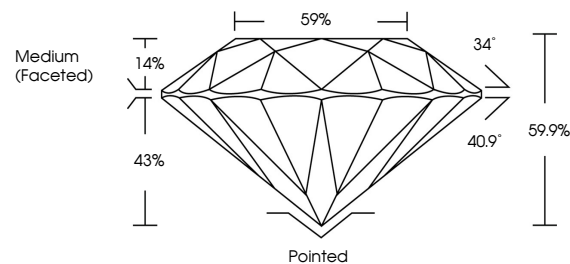
Carat Weight 1.91 CARAT Color Grade F Clarity Grade VS 1 Cut Grade IDEAL

ADDITIONAL GRADING INFORMATION

Polish EXCELLENT Symmetry EXCELLENT Fluorescence NONE Inscription(s) IGI LG639480583

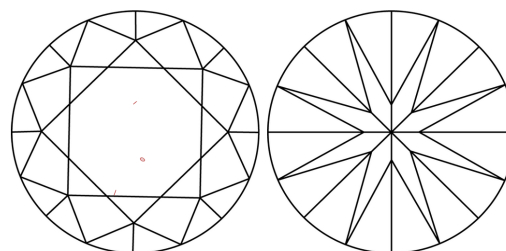
Comments: This Laboratory Grown Diamond was created by Chemical Vapor Deposition (CVD) growth process. Type IIa

PROPORTIONS



Sample Image Used

CLARITY CHARACTERISTICS



KEY TO SYMBOLS

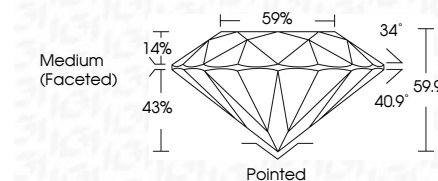
Red symbols indicate internal characteristics. Green symbols indicate external characteristics.

COLOR

D E F G H I J Faint Very Light Light

CLARITY

IF VS 1-2 VS 1-2 SI 1-2 I 1-3 Internally Flawless Very Very Slightly Included Very Slightly Included Slightly Included Included



ADDITIONAL GRADING INFORMATION

Polish EXCELLENT Symmetry EXCELLENT Fluorescence NONE Inscription(s) IGI LG639480583 Comments: This Laboratory Grown Diamond was created by Chemical Vapor Deposition (CVD) growth process. Type IIa



June 17, 2024 IGI Report No LG639480583 ROUND BRILLIANT 8.07 - 8.08 X 4.84 MM 1.91 CARAT F VS 1 IDEAL 59.9% 59% Medium (Faceted) Pointed EXCELLENT EXCELLENT NONE NONE IGI LG639480583 Comments: This Laboratory Grown Diamond was created by Chemical Vapor Deposition (CVD) growth process. Type IIa