



ELECTRONIC COPY

LABORATORY GROWN DIAMOND REPORT

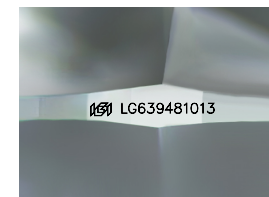
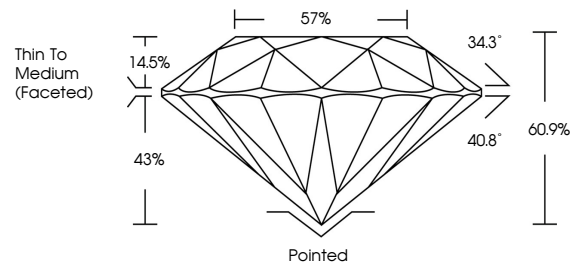
June 12, 2024  
IGI Report Number LG639481013  
Description LABORATORY GROWN DIAMOND  
Shape and Cutting Style ROUND BRILLIANT  
Measurements 6.93 - 6.95 X 4.23 MM  
**GRADING RESULTS**  
Carat Weight 1.23 CARAT  
Color Grade D  
Clarity Grade VS 1  
Cut Grade IDEAL

ADDITIONAL GRADING INFORMATION

Polish EXCELLENT  
Symmetry EXCELLENT  
Fluorescence NONE  
Inscription(s) IGI LG639481013

Comments: HEARTS & ARROWS  
This Laboratory Grown Diamond was created by Chemical Vapor Deposition (CVD) growth process. Type IIa

PROPORTIONS



Sample Image Used

COLOR

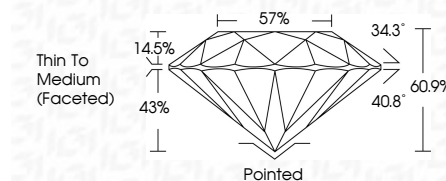
D E F G H I J Faint Very Light Light

CLARITY

IF VS<sup>1-2</sup> VS<sup>1-2</sup> SI<sup>1-2</sup> I<sup>1-3</sup>  
Internally Flawless Very Very Slightly Included Very Slightly Included Slightly Included Included



June 12, 2024  
IGI Report Number LG639481013  
Description LABORATORY GROWN DIAMOND  
Shape and Cutting Style ROUND BRILLIANT  
Measurements 6.93 - 6.95 X 4.23 MM  
**GRADING RESULTS**  
Carat Weight 1.23 CARAT  
Color Grade D  
Clarity Grade VS 1  
Cut Grade IDEAL



ADDITIONAL GRADING INFORMATION

Polish EXCELLENT  
Symmetry EXCELLENT  
Fluorescence NONE  
Inscription(s) IGI LG639481013  
Comments: HEARTS & ARROWS  
This Laboratory Grown Diamond was created by Chemical Vapor Deposition (CVD) growth process. Type IIa



IGI

June 12, 2024  
IGI Report No LG639481013  
ROUND BRILLIANT  
6.93 - 6.95 X 4.23 MM  
1.23 CARAT  
D  
VS 1  
IDEAL  
60.9%  
57%  
Thin To Medium (Faceted)  
Pointed  
EXCELLENT  
EXCELLENT  
NONE  
IGI LG639481013  
Comments: HEARTS & ARROWS  
This Laboratory Grown Diamond was created by Chemical Vapor Deposition (CVD) growth process. Type IIa