



ELECTRONIC COPY

LG639481055
Report verification at igi.org

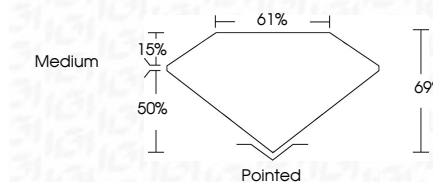


June 17, 2024
IGI Report Number **LG639481055**
Description **LABORATORY GROWN DIAMOND**
Shape and Cutting Style **CUT CORNERED
RECTANGULAR MODIFIED
BRILLIANT**

Measurements **8.76 X 6.06 X 4.18 MM**

GRADING RESULTS

Carat Weight **1.97 CARAT**
Color Grade **F**
Clarity Grade **SI 1**



ADDITIONAL GRADING INFORMATION

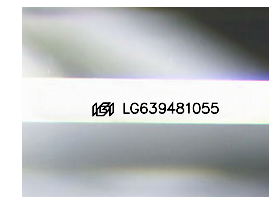
Polish **EXCELLENT**
Symmetry **EXCELLENT**
Fluorescence **NONE**
Inscription(s) **IGI LG639481055**
Comments: This Laboratory Grown Diamond was created by Chemical Vapor Deposition (CVD) growth process. Type IIa



IGI

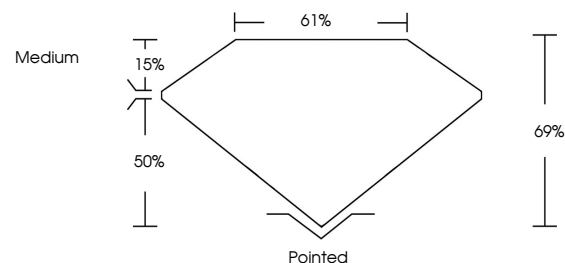
June 17, 2024
IGI Report No. LG639481055
CUT CORNERED RECT. MODIFIED BRILLIANT
8.76 X 6.06 X 4.18 MM
Carat Weight **1.97 CARAT**
Color Grade **F**
Clarity Grade **SI 1**
Depth **69%**
Table **15%**
Girdle **Medium**
Culet **Pointed**
Polish **EXCELLENT**
Symmetry **EXCELLENT**
Fluorescence **NONE**
Inscription(s) **IGI LG639481055**

Comments: This Laboratory Grown Diamond was created by Chemical Vapor Deposition (CVD) growth process. Type IIa

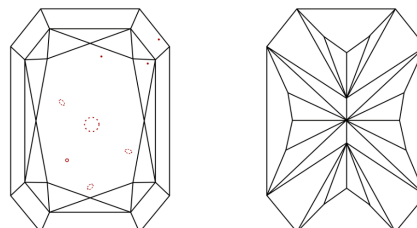


Sample Image Used

PROPORTIONS



CLARITY CHARACTERISTICS



KEY TO SYMBOLS

Red symbols indicate internal characteristics.
Green symbols indicate external characteristics.

COLOR

D E F G H I J Faint Very Light Light

CLARITY

IF	VS ¹⁻²	VS ¹⁻²	SI ¹⁻²	I ¹⁻³
Internally Flawless	Very Very Slightly Included	Very Slightly Included	Slightly Included	Included

