



ELECTRONIC COPY

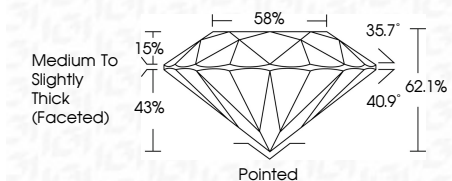
LG639485802 Report verification at igi.org



June 15, 2024 IGI Report Number LG639485802 Description LABORATORY GROWN DIAMOND Shape and Cutting Style ROUND BRILLIANT Measurements 6.81 - 6.84 X 4.24 MM

GRADING RESULTS

Carat Weight 1.23 CARAT Color Grade G Clarity Grade VS 1 Cut Grade IDEAL



ADDITIONAL GRADING INFORMATION

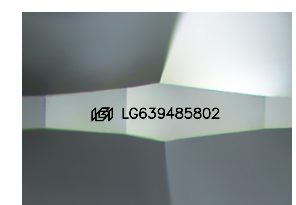
Polish EXCELLENT Symmetry EXCELLENT Fluorescence NONE Inscription(s) IGI LG639485802 Comments: This Laboratory Grown Diamond was created by Chemical Vapor Deposition (CVD) growth process. Type IIa



IGI

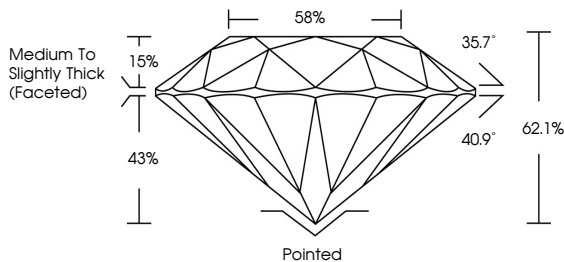
June 15, 2024 IGI Report No LG639485802 ROUND BRILLIANT 6.81 - 6.84 X 4.24 MM 1.23 CARAT G VS 1 IDEAL 62.1% 58% Medium To Slightly Thick (Faceted) Pointed EXCELLENT EXCELLENT NONE IGI LG639485802

Comments: This Laboratory Grown Diamond was created by Chemical Vapor Deposition (CVD) growth process. Type IIa

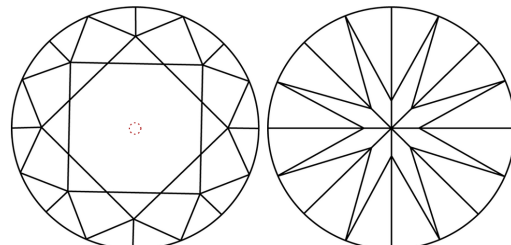


Sample Image Used

PROPORTIONS



CLARITY CHARACTERISTICS



KEY TO SYMBOLS

Red symbols indicate internal characteristics. Green symbols indicate external characteristics.

COLOR

Color scale table with columns D, E, F, G, H, I, J, Faint, Very Light, Light

CLARITY

Clarity scale table with columns IF, VS 1-2, VS 1-2, SI 1-2, I 1-3, Internally Flawless, Very Very Slightly Included, Very Slightly Included, Slightly Included, Included



June 15, 2024 IGI Report No LG639485802 ROUND BRILLIANT 6.81 - 6.84 X 4.24 MM 1.23 CARAT G VS 1 IDEAL 62.1% 58% Medium To Slightly Thick (Faceted) Pointed EXCELLENT EXCELLENT NONE IGI LG639485802

Comments: This Laboratory Grown Diamond was created by Chemical Vapor Deposition (CVD) growth process. Type IIa