



ELECTRONIC COPY

LG639486759
Report verification at igi.org



June 14, 2024

IGI Report Number **LG639486759**

Description **LABORATORY GROWN DIAMOND**

Shape and Cutting Style **SQUARE EMERALD CUT**

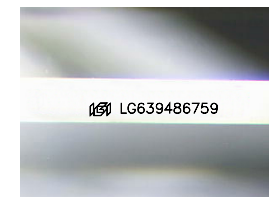
Measurements **9.55 X 9.42 X 6.02 MM**

GRADING RESULTS

Carat Weight **5.04 CARATS**

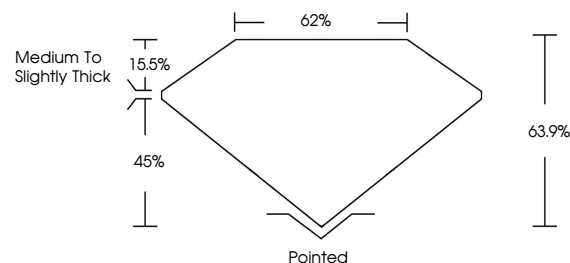
Color Grade **F**

Clarity Grade **VS 1**

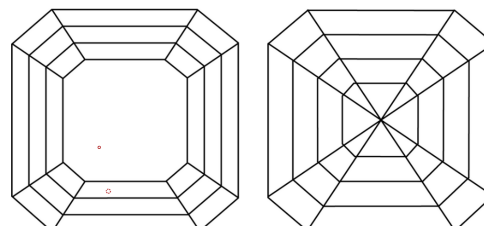


Sample Image Used

PROPORTIONS



CLARITY CHARACTERISTICS



KEY TO SYMBOLS

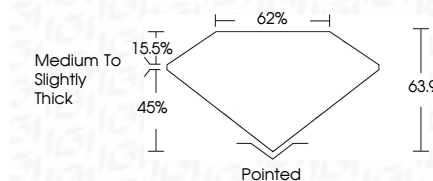
Red symbols indicate internal characteristics.
Green symbols indicate external characteristics.

COLOR

D E F G H I J Faint Very Light Light

CLARITY

IF	VS ¹⁻²	VS ¹⁻²	SI ¹⁻²	I ¹⁻³
Internally Flawless	Very Very Slightly Included	Very Slightly Included	Slightly Included	Included



ADDITIONAL GRADING INFORMATION

Polish **EXCELLENT**

Symmetry **EXCELLENT**

Fluorescence **NONE**

Inscription(s) **IGI LG639486759**

Comments: This Laboratory Grown Diamond was created by Chemical Vapor Deposition (CVD) growth process.
Type IIa



IGI



June 14, 2024
IGI Report No LG639486759
SQUARE EMERALD CUT
9.55 X 9.42 X 6.02 MM

5.04 CARATS
F
VS 1
63.9%
45%
Medium to Slightly Thick
Pointed
EXCELLENT
EXCELLENT
NONE
IGI LG639486759

Comments: This Laboratory Grown Diamond was created by Chemical Vapor Deposition (CVD) growth process.
Type IIa