



ELECTRONIC COPY

LG639486929
Report verification at igi.org



June 13, 2024
IGI Report Number **LG639486929**
Description **LABORATORY GROWN DIAMOND**
Shape and Cutting Style **CUT CORNERED
RECTANGULAR MODIFIED
BRILLIANT**
Measurements **8.02 X 6.00 X 4.07 MM**
GRADING RESULTS
Carat Weight **1.75 CARAT**
Color Grade **G**
Clarity Grade **SI 2**

June 13, 2024
IGI Report Number **LG639486929**
Description **LABORATORY GROWN DIAMOND**
Shape and Cutting Style **CUT CORNERED RECTANGULAR
MODIFIED BRILLIANT**
Measurements **8.02 X 6.00 X 4.07 MM**

GRADING RESULTS

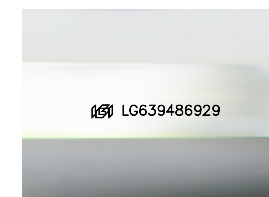
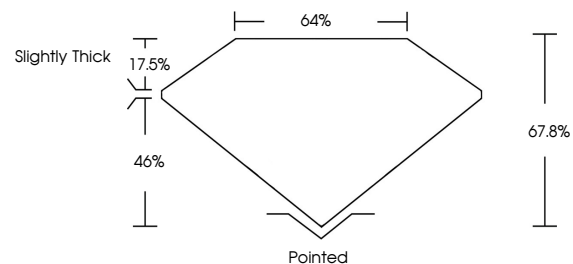
Carat Weight **1.75 CARAT**
Color Grade **G**
Clarity Grade **SI 2**

ADDITIONAL GRADING INFORMATION

Polish **EXCELLENT**
Symmetry **EXCELLENT**
Fluorescence **NONE**
Inscription(s) **IGI LG639486929**

Comments: This Laboratory Grown Diamond was created by Chemical Vapor Deposition (CVD) growth process.
Type IIa

PROPORTIONS



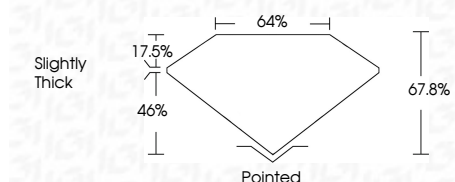
Sample Image Used

COLOR

D E F G H I J Faint Very Light Light

CLARITY

IF	VS ¹⁻²	VS ¹⁻²	SI ¹⁻²	I ¹⁻³
Internally Flawless	Very Very Slightly Included	Very Slightly Included	Slightly Included	Included



ADDITIONAL GRADING INFORMATION

Polish **EXCELLENT**
Symmetry **EXCELLENT**
Fluorescence **NONE**
Inscription(s) **IGI LG639486929**
Comments: This Laboratory Grown Diamond was created by Chemical Vapor Deposition (CVD) growth process.
Type IIa



IGI



June 13, 2024
IGI Report No **LG639486929**
CUT CORNERED RECT. MODIFIED BRILLIANT
8.02 X 6.00 X 4.07 MM
Carat Weight **1.75 CARAT**
Color Grade **G**
Clarity Grade **SI 2**
Table **64%**
Depth **67.8%**
Girdle **46%**
Culet **Slightly Thick**
Polish **Pointed**
Symmetry **EXCELLENT**
Fluorescence **NONE**
Inscription(s) **IGI LG639486929**

Comments: This Laboratory Grown Diamond was created by Chemical Vapor Deposition (CVD) growth process.
Type IIa