



ELECTRONIC COPY

LG639488536 Report verification at igi.org

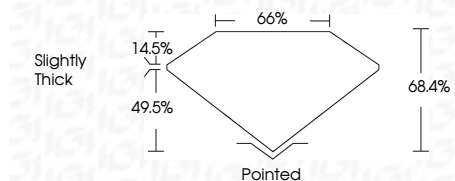


June 14, 2024 IGI Report Number LG639488536 Description LABORATORY GROWN DIAMOND Shape and Cutting Style CUT CORNERED RECTANGULAR MODIFIED BRILLIANT

Measurements 8.43 X 6.23 X 4.26 MM

GRADING RESULTS

Carat Weight 1.98 CARAT Color Grade D Clarity Grade VS 1



ADDITIONAL GRADING INFORMATION

Polish EXCELLENT Symmetry EXCELLENT Fluorescence NONE Inscription(s) IGI LG639488536 Comments: This Laboratory Grown Diamond was created by Chemical Vapor Deposition (CVD) growth process. Type IIa



IGI

June 14, 2024 IGI Report Number LG639488536 Description LABORATORY GROWN DIAMOND Shape and Cutting Style CUT CORNERED RECTANGULAR MODIFIED BRILLIANT Measurements 8.43 X 6.23 X 4.26 MM

GRADING RESULTS

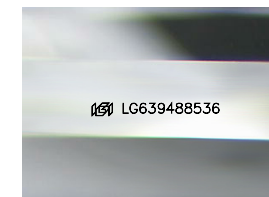
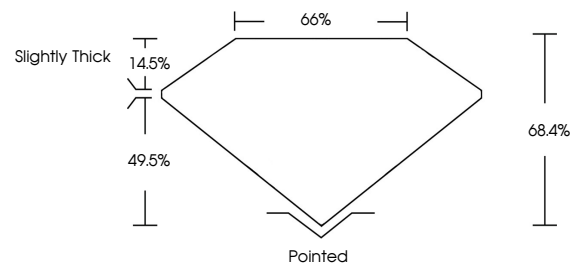
Carat Weight 1.98 CARAT Color Grade D Clarity Grade VS 1

ADDITIONAL GRADING INFORMATION

Polish EXCELLENT Symmetry EXCELLENT Fluorescence NONE Inscription(s) IGI LG639488536

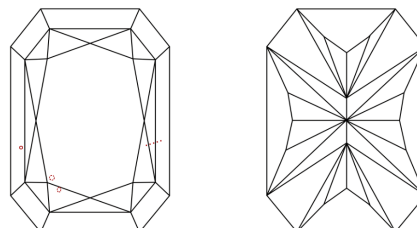
Comments: This Laboratory Grown Diamond was created by Chemical Vapor Deposition (CVD) growth process. Type IIa

PROPORTIONS



Sample Image Used

CLARITY CHARACTERISTICS



KEY TO SYMBOLS

Red symbols indicate internal characteristics. Green symbols indicate external characteristics.

COLOR

D E F G H I J Faint Very Light Light

CLARITY

IF VS 1-2 VS 1-2 SI 1-2 I 1-3 Internally Flawless Very Very Slightly Included Very Slightly Included Slightly Included Included

June 14, 2024 IGI Report No LG639488536 CUT CORNERED RECT. MODIFIED BRILLIANT 1.98 CARAT D VS 1 8.43 X 6.23 X 4.26 MM 68.4% 66% Slightly Thick Pointed EXCELLENT EXCELLENT NONE NONE IGI LG639488536 Comments: This Laboratory Grown Diamond was created by Chemical Vapor Deposition (CVD) growth process. Type IIa