



**ELECTRONIC COPY**

LG639490353  
Report verification at [igi.org](http://igi.org)



June 17, 2024

IGI Report Number **LG639490353**

Description **LABORATORY GROWN DIAMOND**

Shape and Cutting Style **EMERALD CUT**

Measurements **6.81 X 4.93 X 3.19 MM**

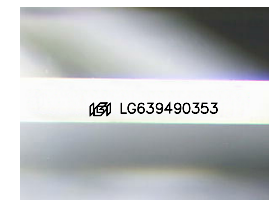
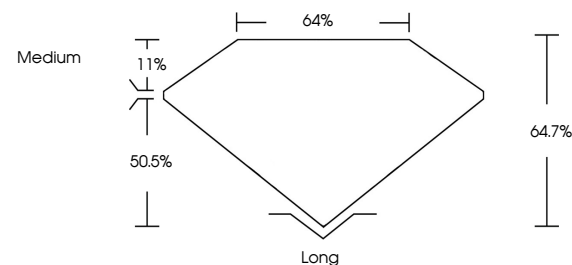
**GRADING RESULTS**

Carat Weight **1.02 CARAT**

Color Grade **F**

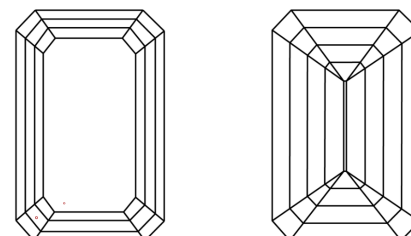
Clarity Grade **VVS 2**

**PROPORTIONS**



Sample Image Used

**CLARITY CHARACTERISTICS**



**KEY TO SYMBOLS**

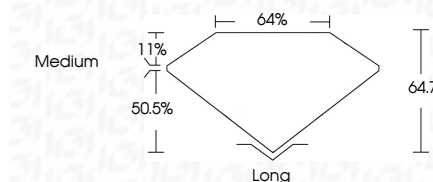
Red symbols indicate internal characteristics.  
Green symbols indicate external characteristics.

**COLOR**

D E F G H I J Faint Very Light Light

**CLARITY**

IF	VS <sup>1-2</sup>	VS <sup>1-2</sup>	SI <sup>1-2</sup>	I <sup>1-3</sup>
Internally Flawless	Very Very Slightly Included	Very Slightly Included	Slightly Included	Included



**ADDITIONAL GRADING INFORMATION**

Polish **EXCELLENT**

Symmetry **EXCELLENT**

Fluorescence **NONE**

Inscription(s) **IGI LG639490353**

Comments: This Laboratory Grown Diamond was created by Chemical Vapor Deposition (CVD) growth process.  
Type IIa



**IGI**

June 17, 2024  
IGI Report No. LG639490353  
EMERALD CUT

1.02 CARAT  
F

6.81 X 4.93 X 3.19 MM  
VVS 2  
64.7%  
64%

Medium  
Long  
EXCELLENT  
EXCELLENT  
NONE  
IGI LG639490353

Comments: This Laboratory Grown Diamond was created by Chemical Vapor Deposition (CVD) growth process.  
Type IIa

