



ELECTRONIC COPY

LG640401705
Report verification at igi.org



June 24, 2024

IGI Report Number **LG640401705**

Description **LABORATORY GROWN DIAMOND**

Shape and Cutting Style **EMERALD CUT**

Measurements **7.87 X 5.67 X 3.60 MM**

GRADING RESULTS

Carat Weight **1.60 CARAT**

Color Grade **E**

Clarity Grade **VS 1**

June 24, 2024

IGI Report Number **LG640401705**

Description **LABORATORY GROWN DIAMOND**

Shape and Cutting Style **EMERALD CUT**

Measurements **7.87 X 5.67 X 3.60 MM**

GRADING RESULTS

Carat Weight **1.60 CARAT**

Color Grade **E**

Clarity Grade **VS 1**

ADDITIONAL GRADING INFORMATION

Polish **EXCELLENT**

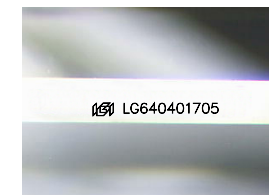
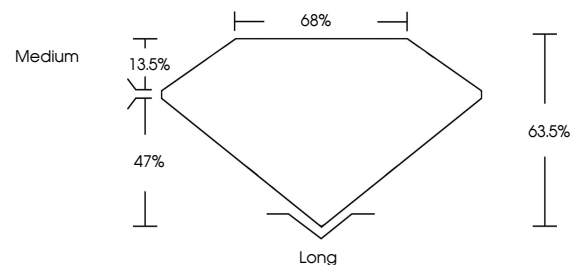
Symmetry **VERY GOOD**

Fluorescence **NONE**

Inscription(s) **IGI LG640401705**

Comments: This Laboratory Grown Diamond was created by Chemical Vapor Deposition (CVD) growth process.
Type IIa

PROPORTIONS



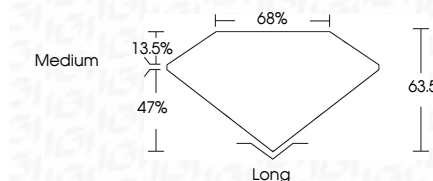
Sample Image Used

COLOR

D E F G H I J Faint Very Light Light

CLARITY

IF	VS ¹⁻²	VS ¹⁻²	SI ¹⁻²	I ¹⁻³
Internally Flawless	Very Very Slightly Included	Very Slightly Included	Slightly Included	Included



ADDITIONAL GRADING INFORMATION

Polish **EXCELLENT**

Symmetry **VERY GOOD**

Fluorescence **NONE**

Inscription(s) **IGI LG640401705**

Comments: This Laboratory Grown Diamond was created by Chemical Vapor Deposition (CVD) growth process.
Type IIa



IGI



June 24, 2024
IGI Report No. LG640401705
EMERALD CUT

7.87 X 5.67 X 3.60 MM
1.60 CARAT
E
VS 1
63.5%
47%
13.5%
Medium
Long
EXCELLENT
VERY GOOD
NONE
IGI LG640401705

Comments: This Laboratory Grown Diamond was created by Chemical Vapor Deposition (CVD) growth process.
Type IIa