



ELECTRONIC COPY

LG640407422
Report verification at igi.org



July 6, 2024
IGI Report Number **LG640407422**
Description **LABORATORY GROWN DIAMOND**
Shape and Cutting Style **PRINCESS CUT**
Measurements **6.33 X 6.18 X 4.44 MM**
GRADING RESULTS
Carat Weight **1.49 CARAT**
Color Grade **FANCY PINK**
Clarity Grade **VS 1**

July 6, 2024
IGI Report Number **LG640407422**
Description **LABORATORY GROWN DIAMOND**
Shape and Cutting Style **PRINCESS CUT**
Measurements **6.33 X 6.18 X 4.44 MM**

GRADING RESULTS

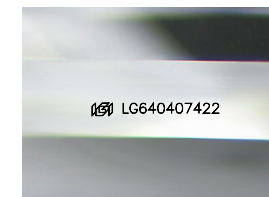
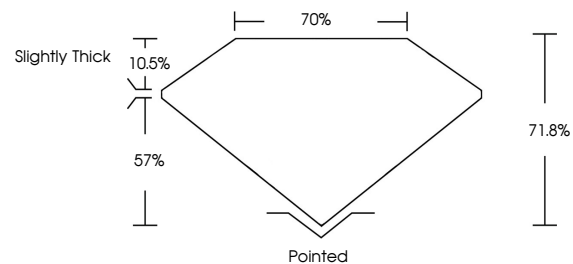
Carat Weight **1.49 CARAT**
Color Grade **FANCY PINK**
Clarity Grade **VS 1**

ADDITIONAL GRADING INFORMATION

Polish **EXCELLENT**
Symmetry **EXCELLENT**
Fluorescence **SLIGHT**
Inscription(s) **IGI LG640407422**

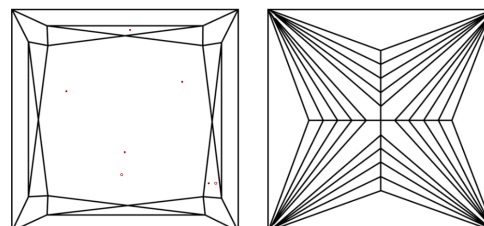
Comments: This Laboratory Grown Diamond was created by Chemical Vapor Deposition (CVD) growth process. Indications of post-growth treatment.

PROPORTIONS



Sample Image Used

CLARITY CHARACTERISTICS



KEY TO SYMBOLS

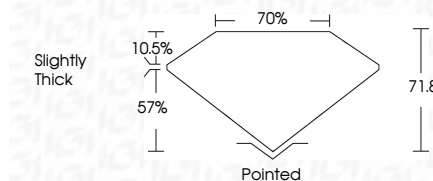
Red symbols indicate internal characteristics.
Green symbols indicate external characteristics.

COLOR

D E F G H I J Faint Very Light Light

CLARITY

IF	VS ¹⁻²	VS ¹⁻²	SI ¹⁻²	I ¹⁻³
Internally Flawless	Very Very Slightly Included	Very Slightly Included	Slightly Included	Included



ADDITIONAL GRADING INFORMATION

Polish **EXCELLENT**
Symmetry **EXCELLENT**
Fluorescence **SLIGHT**
Inscription(s) **IGI LG640407422**
Comments: This Laboratory Grown Diamond was created by Chemical Vapor Deposition (CVD) growth process. Indications of post-growth treatment.



IGI



July 6, 2024
IGI Report No **LG640407422**
PRINCESS CUT
1.49 CARAT
FANCY PINK
Carat Weight
Color Grade
Clarity Grade
Table
Depth
Girdle
Slightly Thick
Pointed
EXCELLENT
Symmetry
Fluorescence
Inscription(s)
VS 1
71.8%
70%
SLIGHT
IGI LG640407422

Comments: This Laboratory Grown Diamond was created by Chemical Vapor Deposition (CVD) growth process. Indications of post-growth treatment.