



**ELECTRONIC COPY**

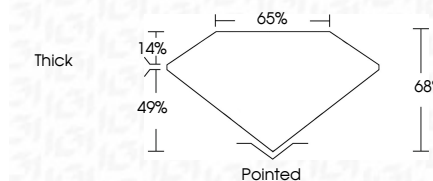
LG640407453  
Report verification at igi.org



June 29, 2024  
IGI Report Number **LG640407453**  
Description **LABORATORY GROWN DIAMOND**  
Shape and Cutting Style **CUT CORNERED  
RECTANGULAR MODIFIED  
BRILLIANT**  
Measurements **7.22 X 4.87 X 3.31 MM**

**GRADING RESULTS**

Carat Weight **1.05 CARAT**  
Color Grade **F**  
Clarity Grade **VS 1**



**ADDITIONAL GRADING INFORMATION**

Polish **EXCELLENT**  
Symmetry **EXCELLENT**  
Fluorescence **NONE**  
Inscription(s) **IGI LG640407453**  
Comments: This Laboratory Grown Diamond was created by Chemical Vapor Deposition (CVD) growth process. Type IIa



June 29, 2024  
IGI Report No. LG640407453  
CUT CORNERED RECT. MODIFIED BRILLIANT  
1.05 CARAT F  
7.22 X 4.87 X 3.31 MM  
Carat Weight  
Color Grade  
Clarity Grade  
Depth  
Table  
Girdle  
Thick  
Pointed  
Polish  
Symmetry  
Fluorescence  
Inscription(s)  
EXCELLENT  
EXCELLENT  
NONE  
IGI LG640407453  
Comments: This Laboratory Grown Diamond was created by Chemical Vapor Deposition (CVD) growth process. Type IIa

**LABORATORY GROWN DIAMOND REPORT**

June 29, 2024  
IGI Report Number **LG640407453**  
Description **LABORATORY GROWN DIAMOND**  
Shape and Cutting Style **CUT CORNERED RECTANGULAR  
MODIFIED BRILLIANT**  
Measurements **7.22 X 4.87 X 3.31 MM**

**GRADING RESULTS**

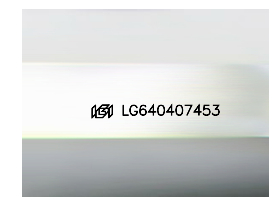
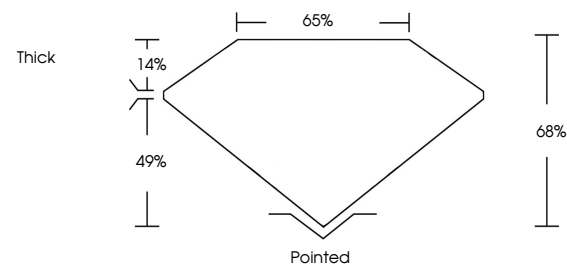
Carat Weight **1.05 CARAT**  
Color Grade **F**  
Clarity Grade **VS 1**

**ADDITIONAL GRADING INFORMATION**

Polish **EXCELLENT**  
Symmetry **EXCELLENT**  
Fluorescence **NONE**  
Inscription(s) **IGI LG640407453**

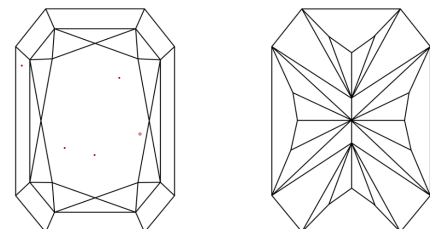
Comments: This Laboratory Grown Diamond was created by Chemical Vapor Deposition (CVD) growth process. Type IIa

**PROPORTIONS**



Sample Image Used

**CLARITY CHARACTERISTICS**



**KEY TO SYMBOLS**

Red symbols indicate internal characteristics.  
Green symbols indicate external characteristics.

**COLOR**

D	E	F	G	H	I	J	Faint	Very Light	Light
---	---	---	---	---	---	---	-------	------------	-------

**CLARITY**

IF	VS <sup>1-2</sup>	VS <sup>1-2</sup>	SI <sup>1-2</sup>	I <sup>1-3</sup>
Internally Flawless	Very Very Slightly Included	Very Slightly Included	Slightly Included	Included



June 29, 2024  
IGI Report No. LG640407453  
CUT CORNERED RECT. MODIFIED BRILLIANT  
1.05 CARAT F  
7.22 X 4.87 X 3.31 MM  
Carat Weight  
Color Grade  
Clarity Grade  
Depth  
Table  
Girdle  
Thick  
Pointed  
Polish  
Symmetry  
Fluorescence  
Inscription(s)  
EXCELLENT  
EXCELLENT  
NONE  
IGI LG640407453

Comments: This Laboratory Grown Diamond was created by Chemical Vapor Deposition (CVD) growth process. Type IIa