



**ELECTRONIC COPY**

LG640408286  
Report verification at igi.org



July 4, 2024  
IGI Report Number **LG640408286**  
Description **LABORATORY GROWN DIAMOND**  
Shape and Cutting Style **ROUND BRILLIANT**  
Measurements **6.81 - 6.85 X 4.24 MM**  
**GRADING RESULTS**  
Carat Weight **1.21 CARAT**  
Color Grade **FANCY VIVID BROWNISH ORANGE**  
Clarity Grade **VS 1**  
Cut Grade **IDEAL**

July 4, 2024  
IGI Report Number **LG640408286**  
Description **LABORATORY GROWN DIAMOND**  
Shape and Cutting Style **ROUND BRILLIANT**  
Measurements **6.81 - 6.85 X 4.24 MM**

**GRADING RESULTS**

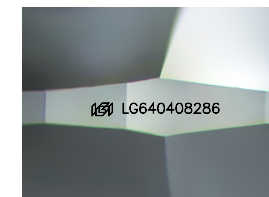
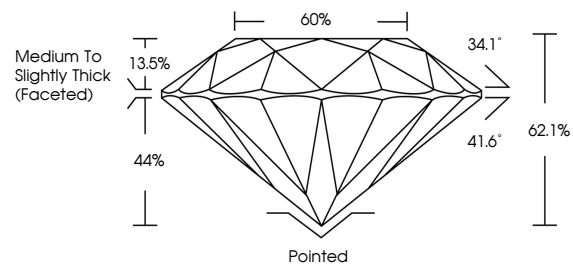
Carat Weight **1.21 CARAT**  
Color Grade **FANCY VIVID BROWNISH ORANGE**  
Clarity Grade **VS 1**  
Cut Grade **IDEAL**

**ADDITIONAL GRADING INFORMATION**

Polish **EXCELLENT**  
Symmetry **EXCELLENT**  
Fluorescence **NONE**  
Inscription(s) **IGI LG640408286**

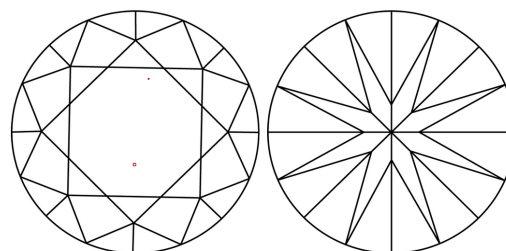
Comments: This Laboratory Grown Diamond was created by Chemical Vapor Deposition (CVD) growth process.  
Indications of post-growth treatment.

**PROPORTIONS**



Sample Image Used

**CLARITY CHARACTERISTICS**



**KEY TO SYMBOLS**

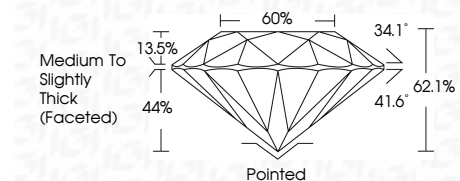
Red symbols indicate internal characteristics.  
Green symbols indicate external characteristics.

**COLOR**

D E F G H I J Faint Very Light Light

**CLARITY**

IF VS<sup>1-2</sup> VS<sup>1-2</sup> SI<sup>1-2</sup> I<sup>1-3</sup>  
Internally Flawless Very Very Slightly Included Very Slightly Included Slightly Included Included



**ADDITIONAL GRADING INFORMATION**

Polish **EXCELLENT**  
Symmetry **EXCELLENT**  
Fluorescence **NONE**  
Inscription(s) **IGI LG640408286**  
Comments: This Laboratory Grown Diamond was created by Chemical Vapor Deposition (CVD) growth process.  
Indications of post-growth treatment.



July 4, 2024  
IGI Report No **LG640408286**  
**ROUND BRILLIANT**  
6.81 - 6.85 X 4.24 MM  
1.21 CARAT  
FANCY VIVID BROWNISH ORANGE  
VS 1  
IDEAL  
60%  
62.1%  
Medium To Slightly Thick (Faceted)  
Pointed  
EXCELLENT  
EXCELLENT  
NONE  
IGI LG640408286  
Comments: This Laboratory Grown Diamond was created by Chemical Vapor Deposition (CVD) growth process.  
Indications of post-growth treatment.