

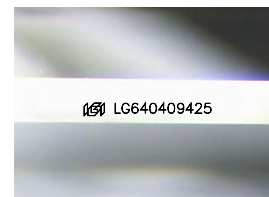
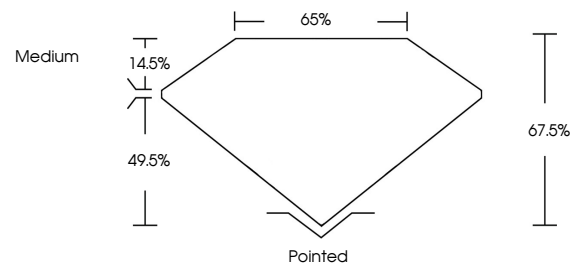


ELECTRONIC COPY

LABORATORY GROWN DIAMOND REPORT

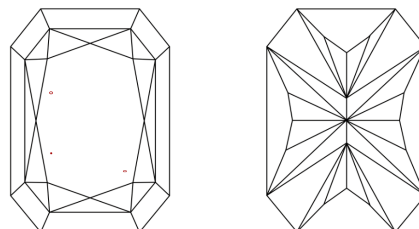
LG640409425
Report verification at igi.org

PROPORTIONS



Sample Image Used

CLARITY CHARACTERISTICS



KEY TO SYMBOLS

Red symbols indicate internal characteristics.
Green symbols indicate external characteristics.

COLOR

D E F G H I J Faint Very Light Light

CLARITY

IF	VVS ¹⁻²	VS ¹⁻²	SI ¹⁻²	I ¹⁻³
Internally Flawless	Very Very Slightly Included	Very Slightly Included	Slightly Included	Included

LABORATORY GROWN DIAMOND REPORT



June 24, 2024

IGI Report Number **LG640409425**

Description	LABORATORY GROWN DIAMOND
-------------	--------------------------

Shape and Cutting Style

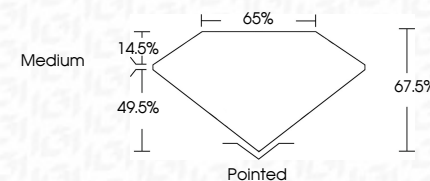
Measurements **8.59 X 6.21 X 4.19 MM**

GRADING RESULTS

Carat Weight **1.95 CARAT**

Color Grade E

Clarity Grade VS 1



ADDITIONAL GRADING INFORMATION

Polish **EXCELLENT**Symmetry **EXCELLENT**Fluorescence **NONE**Inscription(s) LG640409425

Comments: This Laboratory Grown Diamond was created by Chemical Vapor Deposition (CVD) growth process.
Type IIa



© IGI 2020, International Gemological Institute

FD - 10 20

www.igi.org

THIS DOCUMENT WAS PRODUCED WITH THE FOLLOWING SECURITY MEASURES: SPECIAL DOCUMENT PAPER, INK SCREENS, WATERMARK, BACKGROUND DESIGNS, HOLOGRAM AND OTHER SECURITY FEATURES NOT LISTED AND DO EXCEED DOCUMENT SECURITY INDUSTRY GUIDELINES

June 24, 2024	
GJ Report No. LG4409425	
CUT CORNEED RECT. MODIFIED BRILLANT	
Weight	1.96 CARAT
Color Weight	E
Size X Y Z	VS 1
Depth	67.5%
Table	65%
Girdle	Medium
Claw	Poished
Pole	EXCELLENT
Symmetry	EXCELLENT
Fluorescence	NONE
Inscription(s)	(8) LG4409425
Comments:	
	Created by Chem Diamond vsp
	CVI) Growth Deposition
	type IIG