



**ELECTRONIC COPY**

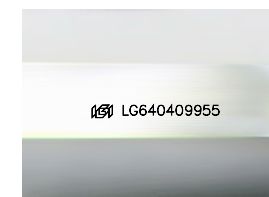
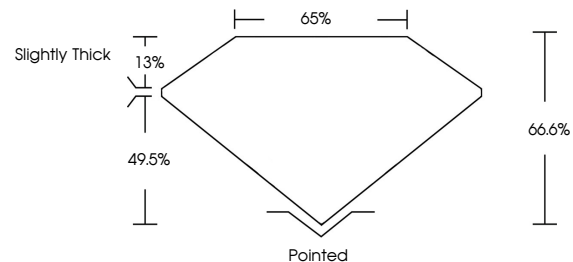
LG640409955  
Report verification at igi.org



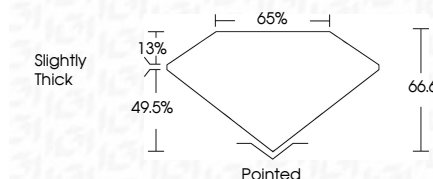
June 22, 2024  
IGI Report Number **LG640409955**  
Description **LABORATORY GROWN DIAMOND**  
Shape and Cutting Style **CUT CORNERED  
RECTANGULAR MODIFIED  
BRILLIANT**  
Measurements **9.74 X 7.10 X 4.73 MM**  
**GRADING RESULTS**  
Carat Weight **2.80 CARATS**  
Color Grade **E**  
Clarity Grade **VVS 2**

June 22, 2024  
IGI Report Number **LG640409955**  
Description **LABORATORY GROWN DIAMOND**  
Shape and Cutting Style **CUT CORNERED RECTANGULAR  
MODIFIED BRILLIANT**  
Measurements **9.74 X 7.10 X 4.73 MM**  
**GRADING RESULTS**  
Carat Weight **2.80 CARATS**  
Color Grade **E**  
Clarity Grade **VVS 2**

**PROPORTIONS**



Sample Image Used



**ADDITIONAL GRADING INFORMATION**

Polish **EXCELLENT**  
Symmetry **EXCELLENT**  
Fluorescence **NONE**  
Inscription(s) **IGI LG640409955**

Comments: This Laboratory Grown Diamond was created by Chemical Vapor Deposition (CVD) growth process.  
Type IIa

**COLOR**

D E F G H I J Faint Very Light Light

**CLARITY**

IF	VS <sup>1-2</sup>	VS <sup>1-2</sup>	SI <sup>1-2</sup>	I <sup>1-3</sup>
Internally Flawless	Very Very Slightly Included	Very Slightly Included	Slightly Included	Included

**ADDITIONAL GRADING INFORMATION**

Polish **EXCELLENT**  
Symmetry **EXCELLENT**  
Fluorescence **NONE**  
Inscription(s) **IGI LG640409955**  
Comments: This Laboratory Grown Diamond was created by Chemical Vapor Deposition (CVD) growth process.  
Type IIa



**IGI**

June 22, 2024  
IGI Report No. **LG640409955**  
**CUT CORNERED RECT. MODIFIED BRILLIANT**  
**9.74 X 7.10 X 4.73 MM**  
Carat Weight **2.80 CARATS**  
Color Grade **E**  
Clarity Grade **VVS 2**  
Table **66.6%**  
Depth **49.5%**  
Girdle **Slightly Thick**  
Culet **Pointed**  
Polish **EXCELLENT**  
Symmetry **EXCELLENT**  
Fluorescence **NONE**  
Inscription(s) **IGI LG640409955**

Comments: This Laboratory Grown Diamond was created by Chemical Vapor Deposition (CVD) growth process.  
Type IIa