



**INTERNATIONAL
GEMOLOGICAL
INSTITUTE**

ELECTRONIC COPY

LG640410189

LABORATORY GROWN DIAMOND REPORT

July 11, 2024
 IGI Report Number **LG640410189**
 Description **LABORATORY GROWN DIAMOND**
 Shape and Cutting Style **ROUND BRILLIANT**
 Measurements **4.85 - 4.87 X 2.88 MM**

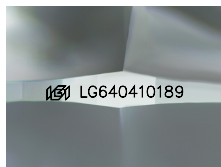
GRADING RESULTS

Carat Weight **0.42 CARAT**
 Color Grade **E**
 Clarity Grade **VVS 2**
 Cut Grade **VERY GOOD**

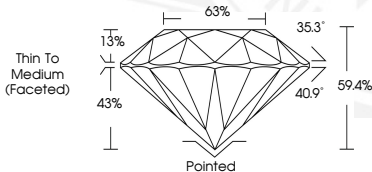
ADDITIONAL GRADING INFORMATION

Polish **EXCELLENT**
 Symmetry **GOOD**
 Fluorescence **NONE**
 Inscription(s) **IGI LG640410189**

Comments: This Laboratory Grown Diamond was created by Chemical Vapor Deposition (CVD) growth process. Type IIa



Sample Image Used



July 11, 2024
 IGI Report Number **LG640410189**
ROUND BRILLIANT
LABORATORY GROWN DIAMOND
4.85 - 4.87 X 2.88 MM
 Carat Weight **0.42 CARAT**
 Color Grade **E**
 Clarity Grade **VVS 2**
 Cut Grade **VERY GOOD**
 Polish **EXCELLENT**
 Symmetry **GOOD**
 Fluorescence **NONE**
 Inscription(s) **IGI LG640410189**

Comments: This Laboratory Grown Diamond was created by Chemical Vapor Deposition (CVD) growth process. Type IIa



July 11, 2024
 IGI Report Number **LG640410189**
ROUND BRILLIANT
LABORATORY GROWN DIAMOND
4.85 - 4.87 X 2.88 MM
 Carat Weight **0.42 CARAT**
 Color Grade **E**
 Clarity Grade **VVS 2**
 Cut Grade **VERY GOOD**
 Polish **EXCELLENT**
 Symmetry **GOOD**
 Fluorescence **NONE**
 Inscription(s) **IGI LG640410189**

Comments: This Laboratory Grown Diamond was created by Chemical Vapor Deposition (CVD) growth process. Type IIa

THIS DOCUMENT WAS PRODUCED WITH THE FOLLOWING SECURITY MEASURES: SPECIAL DOCUMENT PAPER, INK SCREENS, WATERMARK, BACKGROUND DESIGN, HOLOGRAM AND OTHER SECURITY FEATURES NOT LISTED AND DO EXCEED DOCUMENT SECURITY INDUSTRY GUIDELINES.

For terms & conditions and to verify this report, please visit www.igi.org