



ELECTRONIC COPY

LABORATORY GROWN DIAMOND REPORT

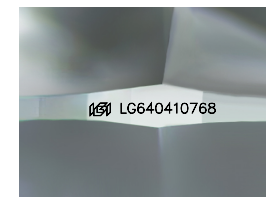
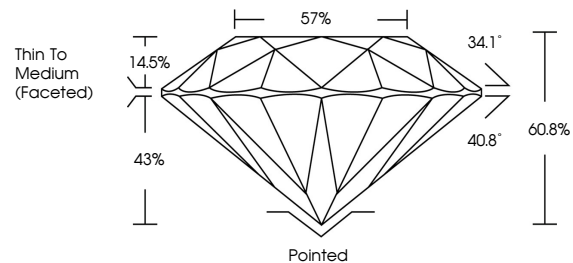
June 22, 2024  
IGI Report Number LG640410768  
Description LABORATORY GROWN DIAMOND  
Shape and Cutting Style ROUND BRILLIANT  
Measurements 7.80 - 7.84 X 4.75 MM  
**GRADING RESULTS**  
Carat Weight 1.76 CARAT  
Color Grade E  
Clarity Grade VVS 2  
Cut Grade IDEAL

ADDITIONAL GRADING INFORMATION

Polish EXCELLENT  
Symmetry EXCELLENT  
Fluorescence NONE  
Inscription(s) IGI LG640410768

Comments: HEARTS & ARROWS  
This Laboratory Grown Diamond was created by Chemical Vapor Deposition (CVD) growth process. Type IIa

PROPORTIONS



Sample Image Used

COLOR

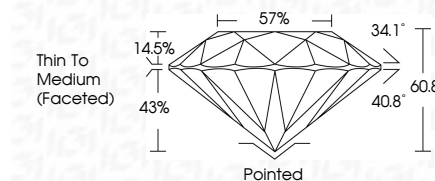
D	E	F	G	H	I	J	Faint	Very Light	Light
---	---	---	---	---	---	---	-------	------------	-------

CLARITY

IF	VVS <sup>1-2</sup>	VS <sup>1-2</sup>	SI <sup>1-2</sup>	I <sup>1-3</sup>
Internally Flawless	Very Very Slightly Included	Very Slightly Included	Slightly Included	Included



June 22, 2024  
IGI Report Number LG640410768  
Description LABORATORY GROWN DIAMOND  
Shape and Cutting Style ROUND BRILLIANT  
Measurements 7.80 - 7.84 X 4.75 MM  
**GRADING RESULTS**  
Carat Weight 1.76 CARAT  
Color Grade E  
Clarity Grade VVS 2  
Cut Grade IDEAL



ADDITIONAL GRADING INFORMATION

Polish EXCELLENT  
Symmetry EXCELLENT  
Fluorescence NONE  
Inscription(s) IGI LG640410768  
Comments: HEARTS & ARROWS  
This Laboratory Grown Diamond was created by Chemical Vapor Deposition (CVD) growth process. Type IIa



IGI

June 22, 2024  
IGI Report No LG640410768  
ROUND BRILLIANT  
7.80 - 7.84 X 4.75 MM  
1.76 CARAT  
E  
VVS 2  
IDEAL  
60.8%  
57%  
Thin To Medium (Faceted)  
Pointed  
EXCELLENT  
EXCELLENT  
NONE  
IGI LG640410768  
Comments: HEARTS & ARROWS  
This Laboratory Grown Diamond was created by Chemical Vapor Deposition (CVD) growth process. Type IIa