



ELECTRONIC COPY

LG640410799
Report verification at igi.org



June 25, 2024

IGI Report Number **LG640410799**

Description **LABORATORY GROWN DIAMOND**

Shape and Cutting Style **PRINCESS CUT**

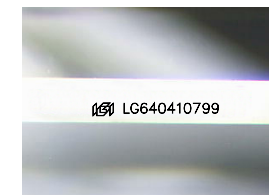
Measurements **7.56 X 7.46 X 5.31 MM**

GRADING RESULTS

Carat Weight **2.62 CARATS**

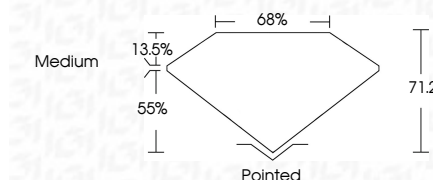
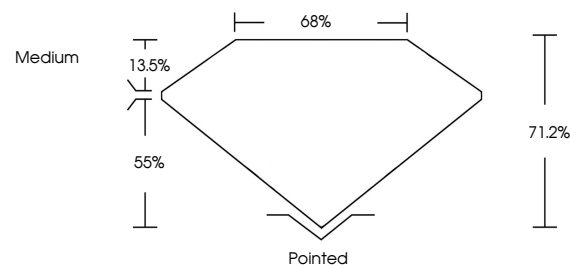
Color Grade **G**

Clarity Grade **VS 1**



Sample Image Used

PROPORTIONS



June 25, 2024

IGI Report Number **LG640410799**

Description **LABORATORY GROWN DIAMOND**

Shape and Cutting Style **PRINCESS CUT**

Measurements **7.56 X 7.46 X 5.31 MM**

GRADING RESULTS

Carat Weight **2.62 CARATS**

Color Grade **G**

Clarity Grade **VS 1**

ADDITIONAL GRADING INFORMATION

Polish **EXCELLENT**

Symmetry **EXCELLENT**

Fluorescence **NONE**

Inscription(s) **IGI LG640410799**

Comments: This Laboratory Grown Diamond was created by Chemical Vapor Deposition (CVD) growth process.
Type IIa

COLOR

D E F G H I J Faint Very Light Light

CLARITY

IF	VS ¹⁻²	VS ¹⁻²	SI ¹⁻²	I ¹⁻³
Internally Flawless	Very Very Slightly Included	Very Slightly Included	Slightly Included	Included

ADDITIONAL GRADING INFORMATION

Polish **EXCELLENT**

Symmetry **EXCELLENT**

Fluorescence **NONE**

Inscription(s) **IGI LG640410799**

Comments: This Laboratory Grown Diamond was created by Chemical Vapor Deposition (CVD) growth process.
Type IIa



IGI

June 25, 2024
IGI Report No. LG640410799
PRINCESS CUT

7.56 X 7.46 X 5.31 MM
2.62 CARATS
Color Grade G
Clarity Grade VS 1
Table 13.5%
Depth 55%
Girdle Medium
Culet Pointed
Polish EXCELLENT
Symmetry EXCELLENT
Fluorescence NONE
Inscription(s) IGI LG640410799

Comments: This Laboratory Grown Diamond was created by Chemical Vapor Deposition (CVD) growth process.
Type IIa