



**ELECTRONIC COPY**

LG640416985  
Report verification at igi.org



June 24, 2024

IGI Report Number **LG640416985**

Description **LABORATORY GROWN DIAMOND**

Shape and Cutting Style **CUT CORNERED  
RECTANGULAR MODIFIED  
BRILLIANT**

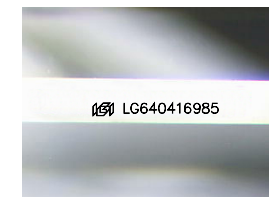
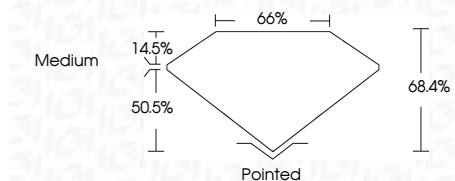
Measurements **8.05 X 5.70 X 3.90 MM**

**GRADING RESULTS**

Carat Weight **1.54 CARAT**

Color Grade **E**

Clarity Grade **VS 1**



Sample Image Used

**ADDITIONAL GRADING INFORMATION**

Polish **EXCELLENT**

Symmetry **EXCELLENT**

Fluorescence **NONE**

Inscription(s) **IGI LG640416985**

Comments: This Laboratory Grown Diamond was created by Chemical Vapor Deposition (CVD) growth process. Type IIa

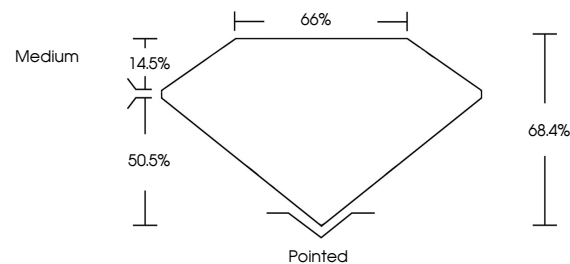


**IGI**

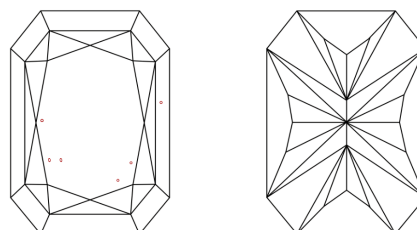
June 24, 2024  
IGI Report No. LG640416985  
CUT CORNERED RECT. MODIFIED BRILLIANT  
8.05 X 5.70 X 3.90 MM  
Carat Weight 1.54 CARAT  
Color Grade E  
Clarity Grade VS 1  
Depth 68.4%  
Table 14.5%  
Girdle Medium  
Culet Pointed  
Polish EXCELLENT  
Symmetry EXCELLENT  
Fluorescence NONE  
Inscription(s) IGI LG640416985  
Comments: This Laboratory Grown Diamond was created by Chemical Vapor Deposition (CVD) growth process. Type IIa



**PROPORTIONS**



**CLARITY CHARACTERISTICS**



**KEY TO SYMBOLS**

Red symbols indicate internal characteristics.  
Green symbols indicate external characteristics.

**COLOR**

D E F G H I J Faint Very Light Light

**CLARITY**

IF	VS <sup>1-2</sup>	VS <sup>1-2</sup>	SI <sup>1-2</sup>	I <sup>1-3</sup>
Internally Flawless	Very Very Slightly Included	Very Slightly Included	Slightly Included	Included