



ELECTRONIC COPY

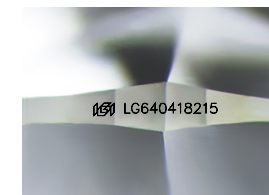
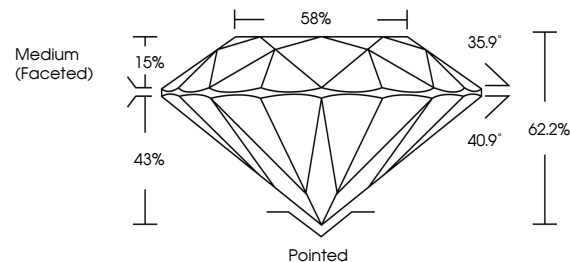
LG640418215 Report verification at igi.org



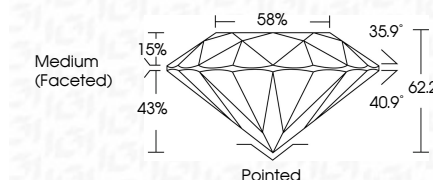
June 22, 2024
IGI Report Number LG640418215
Description LABORATORY GROWN DIAMOND
Shape and Cutting Style ROUND BRILLIANT
Measurements 6.91 - 6.95 X 4.31 MM
GRADING RESULTS
Carat Weight 1.29 CARAT
Color Grade D
Clarity Grade VVS 2
Cut Grade IDEAL

June 22, 2024
IGI Report Number LG640418215
Description LABORATORY GROWN DIAMOND
Shape and Cutting Style ROUND BRILLIANT
Measurements 6.91 - 6.95 X 4.31 MM
GRADING RESULTS
Carat Weight 1.29 CARAT
Color Grade D
Clarity Grade VVS 2
Cut Grade IDEAL

PROPORTIONS



Sample Image Used



ADDITIONAL GRADING INFORMATION

Polish EXCELLENT
Symmetry EXCELLENT
Fluorescence NONE
Inscription(s) IGI LG640418215

Comments: HEARTS & ARROWS
This Laboratory Grown Diamond was created by Chemical Vapor Deposition (CVD) growth process. Type IIa

COLOR

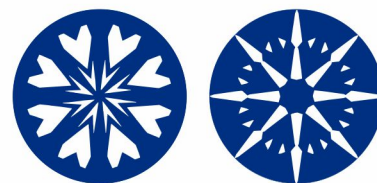
D E F G H I J Faint Very Light Light

CLARITY

IF VVS 1-2 VS 1-2 SI 1-2 I 1-3
Internally Flawless Very Very Slightly Included Very Slightly Included Slightly Included Included

ADDITIONAL GRADING INFORMATION

Polish EXCELLENT
Symmetry EXCELLENT
Fluorescence NONE
Inscription(s) IGI LG640418215
Comments: HEARTS & ARROWS
This Laboratory Grown Diamond was created by Chemical Vapor Deposition (CVD) growth process. Type IIa



IGI

June 22, 2024
IGI Report No LG640418215
ROUND BRILLIANT
6.91 - 6.95 X 4.31 MM
1.29 CARAT
Color Grade D
Clarity Grade VVS 2
Depth 62.2%
Table 86%
Girdle Medium (Faceted)
Culet Pointed
Polish EXCELLENT
Symmetry EXCELLENT
Fluorescence NONE
Inscriptions(s) IGI LG640418215
Comments: HEARTS & ARROWS
This Laboratory Grown Diamond was created by Chemical Vapor Deposition (CVD) growth process. Type IIa