



ELECTRONIC COPY

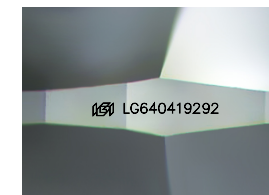
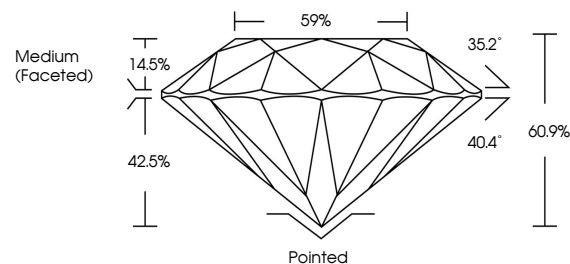
LG640419292
Report verification at igi.org



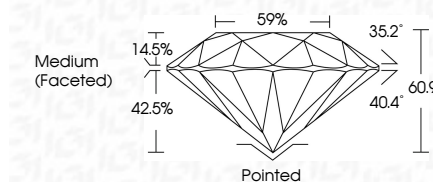
June 25, 2024
IGI Report Number LG640419292
Description LABORATORY GROWN DIAMOND
Shape and Cutting Style ROUND BRILLIANT
Measurements 8.49 - 8.54 X 5.19 MM
GRADING RESULTS
Carat Weight 2.34 CARATS
Color Grade E
Clarity Grade VS 1
Cut Grade IDEAL

June 25, 2024
IGI Report Number LG640419292
Description LABORATORY GROWN DIAMOND
Shape and Cutting Style ROUND BRILLIANT
Measurements 8.49 - 8.54 X 5.19 MM
GRADING RESULTS
Carat Weight 2.34 CARATS
Color Grade E
Clarity Grade VS 1
Cut Grade IDEAL

PROPORTIONS



Sample Image Used



ADDITIONAL GRADING INFORMATION

Polish EXCELLENT
Symmetry EXCELLENT
Fluorescence NONE
Inscription(s) IGI LG640419292

Comments: This Laboratory Grown Diamond was created by Chemical Vapor Deposition (CVD) growth process. Type IIa

COLOR

D E F G H I J Faint Very Light Light

CLARITY

IF VS 1-2 VS 1-2 SI 1-2 I 1-3
Internally Flawless Very Very Slightly Included Very Slightly Included Slightly Included Included

ADDITIONAL GRADING INFORMATION

Polish EXCELLENT
Symmetry EXCELLENT
Fluorescence NONE
Inscription(s) IGI LG640419292
Comments: This Laboratory Grown Diamond was created by Chemical Vapor Deposition (CVD) growth process. Type IIa



June 25, 2024
IGI Report No LG640419292
ROUND BRILLIANT
8.49 - 8.54 X 5.19 MM
2.34 CARATS
E
VS 1
IDEAL
60.9%
59%
Medium (Faceted)
Pointed
EXCELLENT
EXCELLENT
NONE
IGI LG640419292
Comments: This Laboratory Grown Diamond was created by Chemical Vapor Deposition (CVD) growth process. Type IIa