



ELECTRONIC COPY

LG640420477
Report verification at igi.org



June 26, 2024

IGI Report Number **LG640420477**

Description **LABORATORY GROWN DIAMOND**

Shape and Cutting Style **EMERALD CUT**

Measurements **7.97 X 5.78 X 3.55 MM**

GRADING RESULTS

Carat Weight **1.60 CARAT**

Color Grade **G**

Clarity Grade **VS 1**

June 26, 2024

IGI Report Number **LG640420477**

Description **LABORATORY GROWN DIAMOND**

Shape and Cutting Style **EMERALD CUT**

Measurements **7.97 X 5.78 X 3.55 MM**

GRADING RESULTS

Carat Weight **1.60 CARAT**

Color Grade **G**

Clarity Grade **VS 1**

ADDITIONAL GRADING INFORMATION

Polish **VERY GOOD**

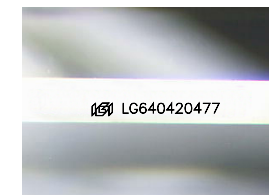
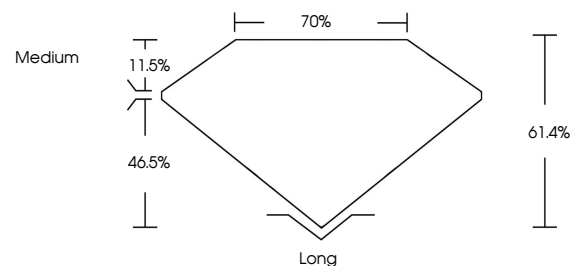
Symmetry **VERY GOOD**

Fluorescence **NONE**

Inscription(s) **IGI LG640420477**

Comments: This Laboratory Grown Diamond was created by Chemical Vapor Deposition (CVD) growth process.
Type IIa

PROPORTIONS



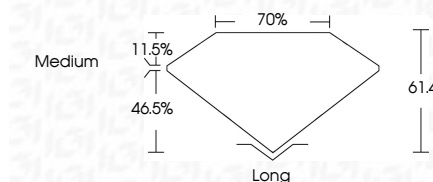
Sample Image Used

COLOR

D E F G H I J Faint Very Light Light

CLARITY

IF	VS ¹⁻²	VS ¹⁻²	SI ¹⁻²	I ¹⁻³
Internally Flawless	Very Very Slightly Included	Very Slightly Included	Slightly Included	Included



ADDITIONAL GRADING INFORMATION

Polish **VERY GOOD**

Symmetry **VERY GOOD**

Fluorescence **NONE**

Inscription(s) **IGI LG640420477**

Comments: This Laboratory Grown Diamond was created by Chemical Vapor Deposition (CVD) growth process.
Type IIa



IGI



June 26, 2024
IGI Report No. LG640420477

EMERALD CUT

7.97 X 5.78 X 3.55 MM

Carat Weight 1.60 CARAT

Color Grade G

Clarity Grade VS 1

Table 61.4%

Girdle 70%

Culet Medium

Polish Long

Symmetry VERY GOOD

Fluorescence NONE

Inscription(s) IGI LG640420477

Comments: This Laboratory Grown Diamond was created by Chemical Vapor Deposition (CVD) growth process.
Type IIa