



ELECTRONIC COPY

LG640421582
Report verification at igi.org



June 26, 2024

IGI Report Number **LG640421582**

Description **LABORATORY GROWN DIAMOND**

Shape and Cutting Style **ROUND BRILLIANT**

Measurements **7.03 - 7.06 X 4.27 MM**

GRADING RESULTS

Carat Weight **1.29 CARAT**

Color Grade **F**

Clarity Grade **VS 1**

Cut Grade **IDEAL**

June 26, 2024

IGI Report Number **LG640421582**

Description **LABORATORY GROWN DIAMOND**

Shape and Cutting Style **ROUND BRILLIANT**

Measurements **7.03 - 7.06 X 4.27 MM**

GRADING RESULTS

Carat Weight **1.29 CARAT**

Color Grade **F**

Clarity Grade **VS 1**

Cut Grade **IDEAL**

ADDITIONAL GRADING INFORMATION

Polish **EXCELLENT**

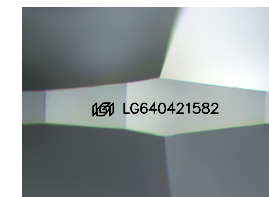
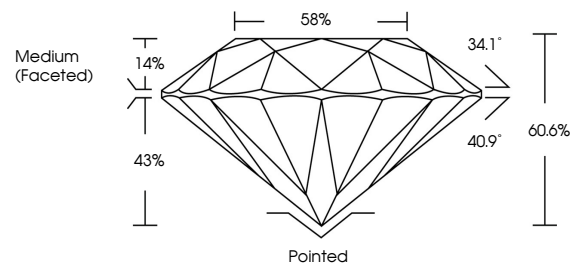
Symmetry **EXCELLENT**

Fluorescence **NONE**

Inscription(s) **IGI LG640421582**

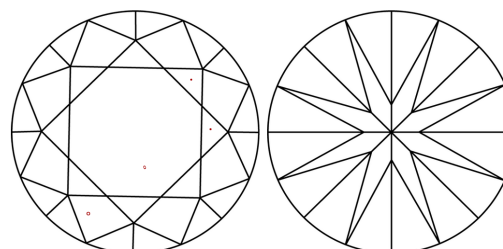
Comments: This Laboratory Grown Diamond was created by Chemical Vapor Deposition (CVD) growth process.
Type IIa

PROPORTIONS



Sample Image Used

CLARITY CHARACTERISTICS



KEY TO SYMBOLS

Red symbols indicate internal characteristics.
Green symbols indicate external characteristics.

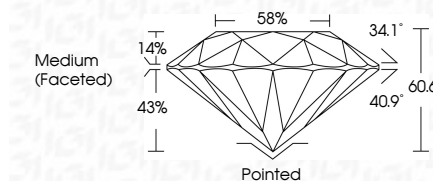
COLOR

D E F G H I J Faint Very Light Light

CLARITY

IF VS¹⁻² VS¹⁻² SI¹⁻² I¹⁻³

Internally Flawless Very Very Slightly Included Very Slightly Included Slightly Included Included



ADDITIONAL GRADING INFORMATION

Polish **EXCELLENT**

Symmetry **EXCELLENT**

Fluorescence **NONE**

Inscription(s) **IGI LG640421582**

Comments: This Laboratory Grown Diamond was created by Chemical Vapor Deposition (CVD) growth process.
Type IIa



IGI



June 26, 2024
IGI Report No LG640421582
ROUND BRILLIANT

1.29 CARAT
F
VS 1
IDEAL
60.6%
58%
Medium (Faceted)

Pointed
EXCELLENT
EXCELLENT
NONE
IGI LG640421582

Cutler
Polish
Symmetry
Fluorescence
Inscriptions(s)

Comments: This Laboratory Grown Diamond was created by Chemical Vapor Deposition (CVD) growth process.
Type IIa