



**INTERNATIONAL  
GEMOLOGICAL  
INSTITUTE**

**ELECTRONIC COPY**

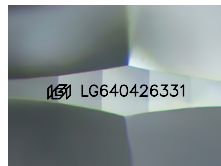
**LG640426331**



August 9, 2024  
**IGI Report Number** LG640426331  
**CUSHION MODIFIED BRILLIANT**  
**LABORATORY GROWN DIAMOND**  
**6.02 X 5.70 X 3.65 MM**  
**Carat Weight** 0.95 CARAT  
**Color Grade** FANCY VIVID BLUE  
**Clarity Grade** VS 2  
**Polish** EXCELLENT  
**Symmetry** EXCELLENT  
**Fluorescence** NONE  
**Inscription(s)** IGI LG640426331

**LABORATORY GROWN DIAMOND REPORT**

August 9, 2024  
**IGI Report Number** LG640426331  
**Description** LABORATORY GROWN DIAMOND  
**Shape and Cutting Style** CUSHION MODIFIED BRILLIANT  
**Measurements** 6.02 X 5.70 X 3.65 MM



Sample Image Used

**Comments:** This Laboratory Grown Diamond was created by Chemical Vapor Deposition (CVD) growth process. Indications of post-growth treatment.

**GRADING RESULTS**

**Carat Weight** 0.95 CARAT  
**Color Grade** FANCY VIVID BLUE  
**Clarity Grade** VS 2

**ADDITIONAL GRADING INFORMATION**

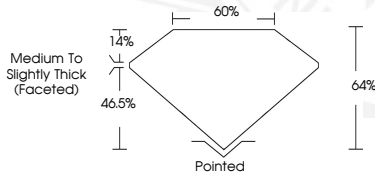
**Polish** EXCELLENT  
**Symmetry** EXCELLENT  
**Fluorescence** NONE  
**Inscription(s)** IGI LG640426331

**Comments:** This Laboratory Grown Diamond was created by Chemical Vapor Deposition (CVD) growth process. Indications of post-growth treatment.



August 9, 2024  
**IGI Report Number** LG640426331  
**CUSHION MODIFIED BRILLIANT**  
**LABORATORY GROWN DIAMOND**  
**6.02 X 5.70 X 3.65 MM**  
**Carat Weight** 0.95 CARAT  
**Color Grade** FANCY VIVID BLUE  
**Clarity Grade** VS 2  
**Polish** EXCELLENT  
**Symmetry** EXCELLENT  
**Fluorescence** NONE  
**Inscription(s)** IGI LG640426331

**Comments:** This Laboratory Grown Diamond was created by Chemical Vapor Deposition (CVD) growth process. Indications of post-growth treatment.



THIS DOCUMENT WAS PRODUCED WITH THE FOLLOWING SECURITY MEASURES: SPECIAL DOCUMENT PAPER, INK SCREENS, WATERMARK, BACKGROUND DESIGNS, HOLOGRAM AND OTHER SECURITY FEATURES NOT LISTED AND DO EXCEED DOCUMENT SECURITY INDUSTRY GUIDELINES.

For terms & conditions and to verify this report, please visit [www.igi.org](http://www.igi.org)