



# INTERNATIONAL GEMOLOGICAL INSTITUTE

ELECTRONIC COPY

LG640434673



June 26, 2024

IGI Report Number LG640434673  
ROUND BRILLIANT  
LABORATORY GROWN DIAMOND  
5.79 - 5.83 X 3.52 MM

Carat Weight 0.73 CARAT  
Color Grade G  
Clarity Grade VVS 2  
Cut Grade IDEAL  
Polish EXCELLENT  
Symmetry EXCELLENT  
Fluorescence NONE  
Inscription(s) IGI LG640434673

Comments: As Grown - No indication of post-growth treatment. This Laboratory Grown Diamond was created by High Pressure High Temperature (HPHT) growth process. Type II Faint Blue

## LABORATORY GROWN DIAMOND REPORT

June 26, 2024  
IGI Report Number LG640434673  
Description LABORATORY GROWN DIAMOND  
Shape and Cutting Style ROUND BRILLIANT  
Measurements 5.79 - 5.83 X 3.52 MM

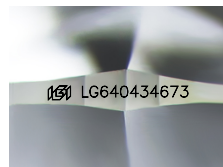
### GRADING RESULTS

Carat Weight 0.73 CARAT  
Color Grade G  
Clarity Grade VVS 2  
Cut Grade IDEAL

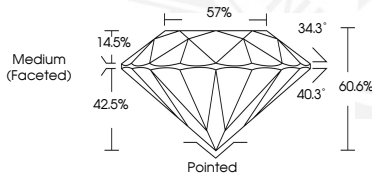
### ADDITIONAL GRADING INFORMATION

Polish EXCELLENT  
Symmetry EXCELLENT  
Fluorescence NONE  
Inscription(s) IGI LG640434673

Comments: As Grown - No indication of post-growth treatment. This Laboratory Grown Diamond was created by High Pressure High Temperature (HPHT) growth process.  
Type II  
Faint Blue



Sample Image Used



June 26, 2024

IGI Report Number LG640434673  
ROUND BRILLIANT  
LABORATORY GROWN DIAMOND  
5.79 - 5.83 X 3.52 MM

Carat Weight 0.73 CARAT  
Color Grade G  
Clarity Grade VVS 2  
Cut Grade IDEAL  
Polish EXCELLENT  
Symmetry EXCELLENT  
Fluorescence NONE  
Inscription(s) IGI LG640434673

Comments: As Grown - No indication of post-growth treatment. This Laboratory Grown Diamond was created by High Pressure High Temperature (HPHT) growth process. Type II Faint Blue



THIS DOCUMENT WAS PRODUCED WITH THE FOLLOWING SECURITY MEASURES: SPECIAL DOCUMENT PAPER, INK SCREENS, WATERMARK, BACKGROUND DESIGNS, HOLOGRAM AND OTHER SECURITY FEATURES NOT LISTED AND DO EXCEED DOCUMENT SECURITY INDUSTRY GUIDELINES.

For terms & conditions and to verify this report, please visit [www.igi.org](http://www.igi.org)