



ELECTRONIC COPY

LG640439759 Report verification at igi.org



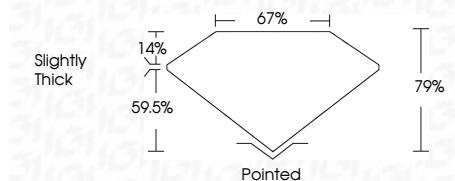
June 25, 2024 IGI Report Number LG640439759 Description LABORATORY GROWN DIAMOND

Shape and Cutting Style CUT CORNERED RECTANGULAR MODIFIED BRILLIANT

Measurements 7.41 X 4.52 X 3.57 MM

GRADING RESULTS

Carat Weight 1.01 CARAT Color Grade E Clarity Grade VVS 2



ADDITIONAL GRADING INFORMATION

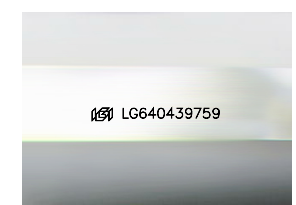
Polish EXCELLENT Symmetry EXCELLENT Fluorescence NONE

Inscription(s) IGI LG640439759 Comments: This Laboratory Grown Diamond was created by Chemical Vapor Deposition (CVD) growth process. Type IIa



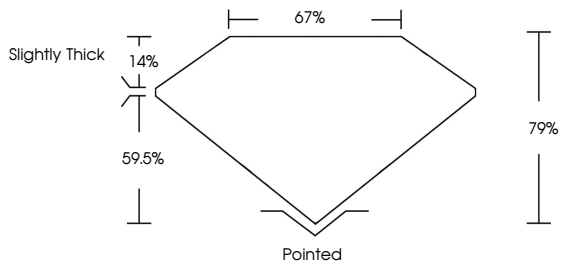
June 25, 2024 IGI Report No. LG640439759 CUT CORNERED RECT. MODIFIED BRILLIANT 1.01 CARAT E VVS 2 79% 67% Slightly Thick Pointed EXCELLENT EXCELLENT NONE IGI LG640439759

Comments: This Laboratory Grown Diamond was created by Chemical Vapor Deposition (CVD) growth process. Type IIa

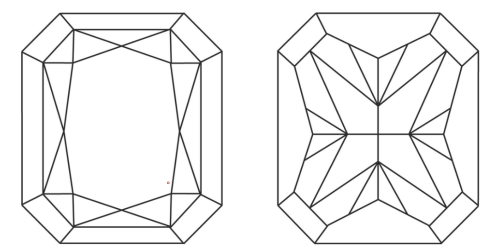


Sample Image Used

PROPORTIONS



CLARITY CHARACTERISTICS



KEY TO SYMBOLS

Red symbols indicate internal characteristics. Green symbols indicate external characteristics.

COLOR

Table with color scale: D, E, F, G, H, I, J, Faint, Very Light, Light

CLARITY

Table with clarity scale: IF, VVS 1-2, VS 1-2, SI 1-2, I 1-3, Internally Flawless, Very Very Slightly Included, Very Slightly Included, Slightly Included, Included



June 25, 2024 IGI Report Number LG640439759 Description LABORATORY GROWN DIAMOND Shape and Cutting Style CUT CORNERED RECTANGULAR MODIFIED BRILLIANT Measurements 7.41 X 4.52 X 3.57 MM

GRADING RESULTS

Carat Weight 1.01 CARAT Color Grade E Clarity Grade VVS 2

ADDITIONAL GRADING INFORMATION

Polish EXCELLENT Symmetry EXCELLENT Fluorescence NONE

Inscription(s) IGI LG640439759

Comments: This Laboratory Grown Diamond was created by Chemical Vapor Deposition (CVD) growth process. Type IIa