



**INTERNATIONAL  
GEMOLOGICAL  
INSTITUTE**

**ELECTRONIC COPY**

**LG640445951**

**LABORATORY GROWN DIAMOND REPORT**

July 2, 2024  
 IGI Report Number **LG640445951**  
 Description **LABORATORY GROWN DIAMOND**  
 Shape and Cutting Style **SQUARE CUSHION MODIFIED BRILLIANT**  
 Measurements **5.43 X 5.43 X 3.33 MM**

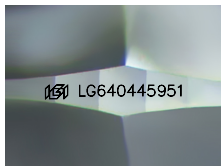
**GRADING RESULTS**

Carat Weight **0.91 CARAT**  
 Color Grade **FANCY VIVID YELLOW**  
 Clarity Grade **VVS 1**

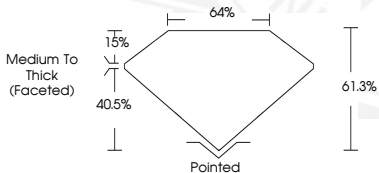
**ADDITIONAL GRADING INFORMATION**

Polish **EXCELLENT**  
 Symmetry **EXCELLENT**  
 Fluorescence **NONE**  
 Inscription(s) **IGI LG640445951**

Comments: As Grown - No indication of post-growth treatment. This Laboratory Grown Diamond was created by High Pressure High Temperature (HPHT) growth process.



Sample Image Used



July 2, 2024  
 IGI Report Number **LG640445951**  
 SQUARE CUSHION MODIFIED  
 BRILLIANT  
 LABORATORY GROWN DIAMOND  
 5.43 X 5.43 X 3.33 MM  
 Carat Weight **0.91 CARAT**  
 Color Grade **FANCY VIVID  
YELLOW**  
 Clarity Grade **VVS 1**  
 Polish **EXCELLENT**  
 Symmetry **EXCELLENT**  
 Fluorescence **NONE**  
 Inscription(s) **IGI LG640445951**

Comments: As Grown - No indication of post-growth treatment. This Laboratory Grown Diamond was created by High Pressure High Temperature (HPHT) growth process.



July 2, 2024  
 IGI Report Number **LG640445951**  
 SQUARE CUSHION MODIFIED  
 BRILLIANT  
 LABORATORY GROWN DIAMOND  
 5.43 X 5.43 X 3.33 MM  
 Carat Weight **0.91 CARAT**  
 Color Grade **FANCY VIVID  
YELLOW**  
 Clarity Grade **VVS 1**  
 Polish **EXCELLENT**  
 Symmetry **EXCELLENT**  
 Fluorescence **NONE**  
 Inscription(s) **IGI LG640445951**

Comments: As Grown - No indication of post-growth treatment. This Laboratory Grown Diamond was created by High Pressure High Temperature (HPHT) growth process.

THIS DOCUMENT WAS PRODUCED WITH THE FOLLOWING SECURITY MEASURES: SPECIAL DOCUMENT PAPER, INK SCREENS, WATERMARK, BACKGROUND DESIGN, HOLOGRAM AND OTHER SECURITY FEATURES NOT LISTED AND DO EXCEED DOCUMENT SECURITY INDUSTRY GUIDELINES.

For terms & conditions and to verify this report, please visit [www.igi.org](http://www.igi.org)