



ELECTRONIC COPY

LG640447887 Report verification at igi.org



June 26, 2024 IGI Report Number LG640447887 Description LABORATORY GROWN DIAMOND Shape and Cutting Style ROUND BRILLIANT Measurements 7.43 - 7.47 X 4.56 MM GRADING RESULTS Carat Weight 1.53 CARAT Color Grade D Clarity Grade VS 1 Cut Grade EXCELLENT

June 26, 2024 IGI Report Number LG640447887 Description LABORATORY GROWN DIAMOND Shape and Cutting Style ROUND BRILLIANT Measurements 7.43 - 7.47 X 4.56 MM

GRADING RESULTS

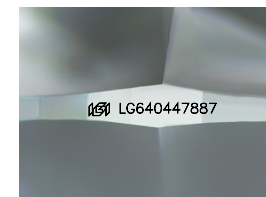
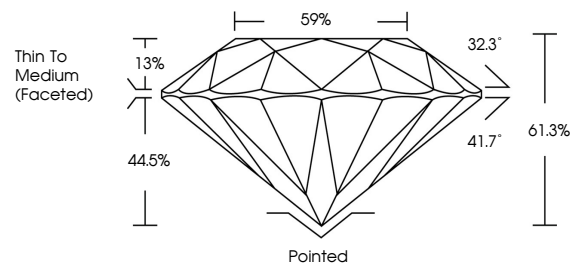
Carat Weight 1.53 CARAT Color Grade D Clarity Grade VS 1 Cut Grade EXCELLENT

ADDITIONAL GRADING INFORMATION

Polish EXCELLENT Symmetry EXCELLENT Fluorescence NONE Inscription(s) IGI LG640447887

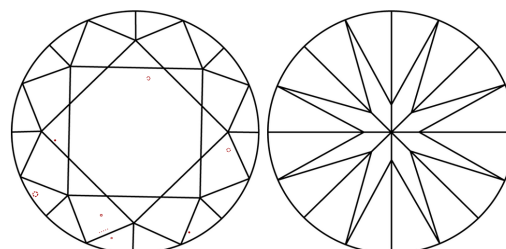
Comments: This Laboratory Grown Diamond was created by Chemical Vapor Deposition (CVD) growth process. Type IIa

PROPORTIONS



Sample Image Used

CLARITY CHARACTERISTICS



KEY TO SYMBOLS

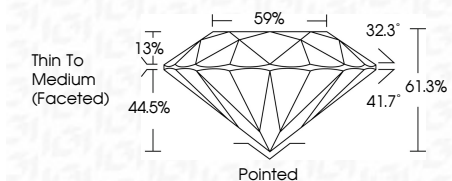
Red symbols indicate internal characteristics. Green symbols indicate external characteristics.

COLOR

D E F G H I J Faint Very Light Light

CLARITY

IF VS 1-2 VS 1-2 SI 1-2 I 1-3 Internally Flawless Very Very Slightly Included Very Slightly Included Slightly Included Included



ADDITIONAL GRADING INFORMATION

Polish EXCELLENT Symmetry EXCELLENT Fluorescence NONE Inscription(s) IGI LG640447887 Comments: This Laboratory Grown Diamond was created by Chemical Vapor Deposition (CVD) growth process. Type IIa



IGI



June 26, 2024 IGI Report No LG640447887 ROUND BRILLIANT 7.43 - 7.47 X 4.56 MM 1.53 CARAT D EXCELLENT VS 1 EXCELLENT 61.3% 59% Thin To Medium (Faceted) Pointed EXCELLENT EXCELLENT NONE NONE IGI LG640447887 Comments: This Laboratory Grown Diamond was created by Chemical Vapor Deposition (CVD) growth process. Type IIa