

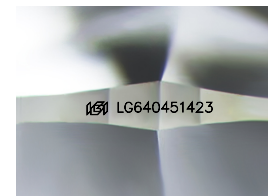
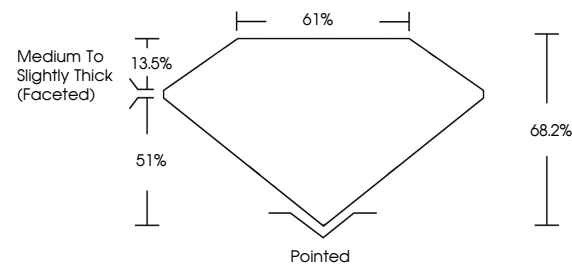


ELECTRONIC COPY

LABORATORY GROWN DIAMOND REPORT

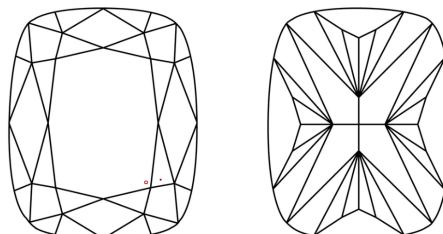
LG640451423
Report verification at igi.org

PROPORTIONS



Sample Image Used

CLARITY CHARACTERISTICS



KEY TO SYMBOLS

Red symbols indicate internal characteristics.
Green symbols indicate external characteristics.

COLOR

D E F G H I J Faint Very Light Light

CLARITY

IF	VVS ^{1,2}	VS ^{1,2}	SI ^{1,2}	I ^{1,3}
Internally Flawless	Very Very Slightly Included	Very Slightly Included	Slightly Included	Included

LABORATORY GROWN DIAMOND REPORT



June 27, 2024

IGI Report Number **LG640451423**

Description	LABORATORY GROWN DIAMOND
-------------	--------------------------

Shape and Cutting Style **CUSHION BRILLIANT**

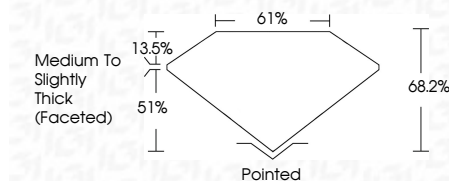
Measurements 8.99 X 6.50 X 4.43 MM

GRADING RESULTS

Carat Weight **2.06 CARATS**

Color Grade H

Clarity Grade VS 1



ADDITIONAL GRADING INFORMATION

Polish EXCELLENT

Symmetry **EXCELLENT**Fluorescence **NONE**Inscription(s) LG640451423

Comments: This Laboratory Grown Diamond was created by Chemical Vapor Deposition (CVD) growth process.
Type IIa



© IGI 2020, International Gemmological Institute

FD - 10 20



THIS DOCUMENT WAS PRODUCED WITH THE FOLLOWING SECURITY MEASURES: SPECIAL DOCUMENT PAPER, INK SCREENS, WATERMARK, BACKGROUND DESIGNS, HOLOGRAM AND OTHER SECURITY FEATURES NOT LISTED AND DO EXCEED DOCUMENT SECURITY INDUSTRY GUIDELINE

June 27, 2024
IGI Report No LG640451423
CUSHION BRILLIANT

CUSHION BRILLIANT	9.97 X 6.50 X 4.83 MM	2.06 CARATS
Carat Weight	Vs1	EXCELLENT
Color Grade	G8-2	EXCELLENT
Clarity Grade	H	NONE
Depth	61%	
Table	Medium To Slightly Thick (faceted)	
Girdle		
Culet	Poished	
Polish	Excellent	
Symmetry	Excellent	
Fluorescence	None	
Comments:		

Comments:
This Laboratory Grown Diamond was created by Chemical Vapor Deposition (CVD) growth process.

www.igi.org